

ORTEC[®]

DSPEC[®] jr 2.0
Digital Gamma-Ray Spectrometer
Hardware User's Manual

Advanced Measurement Technology, Inc.
(“AMT”)

WARRANTY

AMT warrants that the items will be delivered free from defects in material or workmanship. AMT makes no other warranties, express or implied, and specifically NO WARRANTY OF MERCHANTABILITY OR FITNESS FOR A PARTICULAR PURPOSE.

AMT’s exclusive liability is limited to repairing or replacing at AMT’s option, items found by AMT to be defective in workmanship or materials within one year from the date of delivery. AMT’s liability on any claim of any kind, including negligence, loss, or damages arising out of, connected with, or from the performance or breach thereof, or from the manufacture, sale, delivery, resale, repair, or use of any item or services covered by this agreement or purchase order, shall in no case exceed the price allocable to the item or service furnished or any part thereof that gives rise to the claim. In the event AMT fails to manufacture or deliver items called for in this agreement or purchase order, AMT’s exclusive liability and buyer’s exclusive remedy shall be release of the buyer from the obligation to pay the purchase price. In no event shall AMT be liable for special or consequential damages.

Quality Control

Before being approved for shipment, each AMT instrument must pass a stringent set of quality control tests designed to expose any flaws in materials or workmanship. Permanent records of these tests are maintained for use in warranty repair and as a source of statistical information for design improvements.

Repair Service

If it becomes necessary to return this instrument for repair, it is essential that Customer Services be contacted in advance of its return so that a Return Authorization Number can be assigned to the unit. Also, AMT must be informed, either in writing, by telephone [(865) 482-4411] or by facsimile transmission [(865) 483-2133], of the nature of the fault of the instrument being returned and of the model, serial, and revision (“Rev” on rear panel) numbers. Failure to do so may cause unnecessary delays in getting the unit repaired. The AMT standard procedure requires that instruments returned for repair pass the same quality control tests that are used for new-production instruments. Instruments that are returned should be packed so that they will withstand normal transit handling and must be shipped PREPAID via Air Parcel Post or United Parcel Service to the designated AMT repair center. The address label and the package should include the Return Authorization Number assigned. Instruments being returned that are damaged in transit due to inadequate packing will be repaired at the sender’s expense, and it will be the sender’s responsibility to make claim with the shipper. Instruments not in warranty should follow the same procedure and AMT will provide a quotation.

Damage in Transit

Shipments should be examined immediately upon receipt for evidence of external or concealed damage. The carrier making delivery should be notified immediately of any such damage, since the carrier is normally liable for damage in shipment. Packing materials, waybills, and other such documentation should be preserved in order to establish claims. After such notification to the carrier, please notify AMT of the circumstances so that assistance can be provided in making damage claims and in providing replacement equipment, if necessary.

Copyright © 2014, Advanced Measurement Technology, Inc. All rights reserved.

ORTEC® is a registered trademark of Advanced Measurement Technology, Inc. All other trademarks used herein are the property of their respective owners.

NOTICE OF PROPRIETARY PROPERTY — This document and the information contained in it are the proprietary property of AMETEK Inc. It may not be copied or used in any manner nor may any of the information in or upon it be used for any purpose without the express written consent of an authorized agent of AMETEK Inc.

ADDITIONAL WARRANTY STATEMENT

Please note that the DSPEC jr 2.0 contains *no user-serviceable parts*. Breaking the seal on the case *voids your warranty*. The DSPEC jr 2.0 should be opened only by ORTEC-authorized service personnel.

[Intentionally blank]

TABLE OF CONTENTS

Installation — page 19

WARRANTY	ii
ADDITIONAL WARRANTY STATEMENT	iii
Safety Instructions and Symbols	vii
Cleaning Instructions	vii
1. INTRODUCTION	1
1.1. Why the DSPEC jr 2.0?	1
1.2. The Low Frequency Rejector (LFR) Filter	3
1.3. Ballistic Deficit and Adjusting the Flattop Duration	6
1.4. Zero Dead-Time (ZDT) Mode	7
1.4.1. Off — Uncorrected Spectrum Only	9
1.4.2. NORM_CORR — ZDT and Uncorrected Spectra Stored	9
1.4.3. CORR_ERR — ZDT and Error Spectra Stored	9
1.4.4. Choosing a ZDT Mode	11
1.4.4.1. The NORM_CORR Diagnostic Mode	12
1.4.4.2. To Summarize	12
1.4.4.3. More Information	12
1.5. DSPEC jr 2.0 SMART-1 HPGe Detector Support	12
1.5.1. SMART-1 HPGe Detector Construction	13
1.5.2. Using Older Detectors	13
1.5.3. How State of Health (SOH) is Monitored	14
1.6. Host Computer and Software Requirements	14
1.7. About this Manual	14
2. GETTING STARTED	17
2.1. The DSPEC jr 2.0	17
2.1.1. Front Panel	17
2.1.1.1. The Display	17
2.1.1.2. Controls	18
2.1.2. Rear Panel	18
2.2. Software and Hardware Installation	19
2.2.1. Step 1: Install the CONNECTIONS Driver Update	19
2.2.2. Step 2: Install MAESTRO	20
2.2.3. Step 3: Connect the DSPEC jr 2.0 to the Computer	20
2.2.4. Step 4: Run MCB Configuration to Communicate With Your MCBs	21

2.2.4.1. Configuring a New Instrument	22
2.2.4.2. Customizing ID Numbers and Descriptions	22
2.2.5. Attaching More Than One DSPEC jr 2.0 to the Computer	23
2.2.6. Connecting to and Disconnecting from the Computer	23
2.3. DSPEC jr 2.0 MCB Properties in MAESTRO	23
2.3.1. Amplifier	24
2.3.2. Amplifier 2	26
2.3.2.1. InSight Mode	27
Mark Types	29
2.3.3. Amplifier PRO	30
2.3.4. ADC	31
2.3.5. Stabilizer	32
2.3.6. High Voltage	33
2.3.7. About	34
2.3.8. Status	34
2.3.9. Presets	37
2.3.10. MDA Preset	38
2.4. Setting the Rise Time in Digital MCBs	40
2.5. Troubleshooting	41
2.5.1. MAESTRO Does Not Connect with the DSPEC jr 2.0	41
3. SPECIFICATIONS	43
3.1. DSPEC jr 2.0	43
3.1.1. Electrical and Mechanical	45
3.1.2. Connectors	46
3.2. HPGe High-Voltage Detector Interface Modules	46
3.3. Feature Mask Bits	47
4. FIRMWARE COMMANDS AND RESPONSES	51
4.1. Command Format	51
4.2. Error Codes	51
4.2.1. Dollar Response Records	52
4.2.2. MCB Commands	53
APPENDIX A. STATE-OF-HEALTH BIT DEFINITIONS	89
INDEX	91

Safety Instructions and Symbols

This manual contains up to three levels of safety instructions that must be observed in order to avoid personal injury and/or damage to equipment or other property. These are:

DANGER Indicates a hazard that could result in death or serious bodily harm if the safety instruction is not observed.

WARNING Indicates a hazard that could result in bodily harm if the safety instruction is not observed.

CAUTION Indicates a hazard that could result in property damage if the safety instruction is not observed.

In addition, the following symbols may appear on the product:



DANGER – Hazardous voltage



ATTENTION – Consult the manual in all cases where this symbol is marked in order to determine the nature of the potential hazards and any actions that must be taken to avoid them



Protective earth (ground) terminal

Please read all safety instructions carefully and make sure you understand them fully before attempting to use this product.

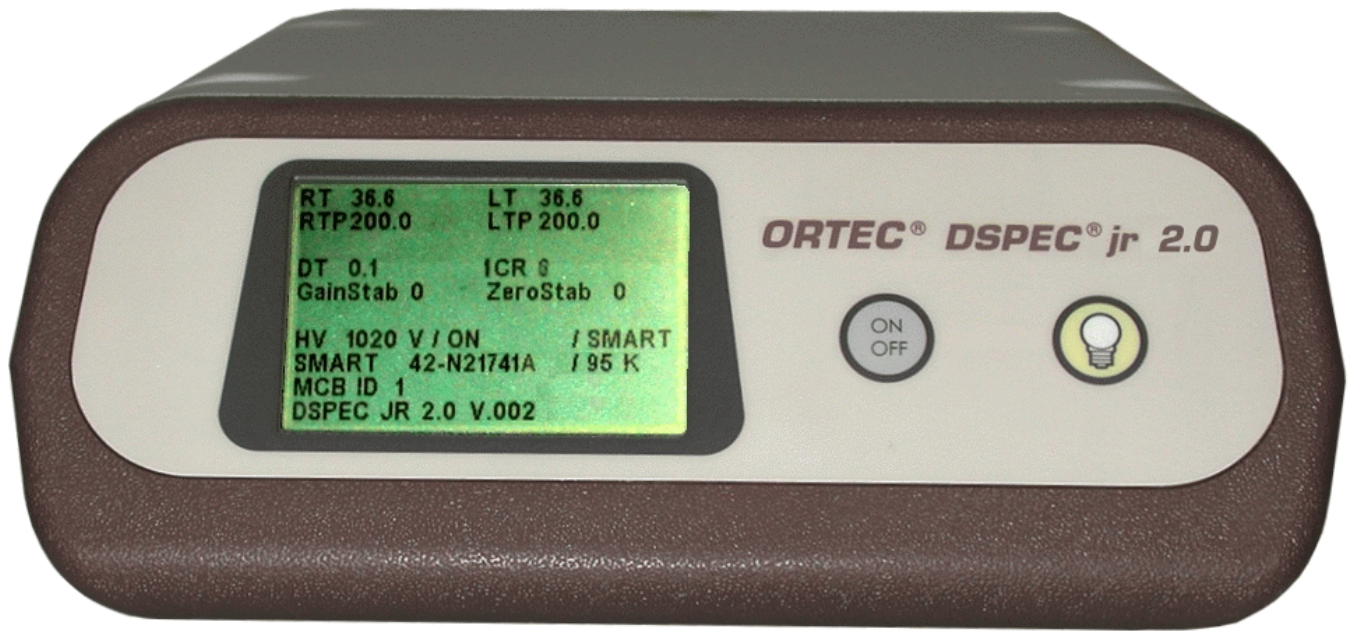
Cleaning Instructions

To clean the instrument exterior:

- Disconnect the instrument from the power source.
- Remove loose dust on the outside of the instrument with a lint-free cloth.
- Remove remaining dirt with a lint-free cloth dampened in a general-purpose detergent and water solution. Do not use abrasive cleaners.

CAUTION To prevent moisture inside of the instrument during external cleaning, use only enough liquid to dampen the cloth or applicator.

- Allow the instrument to dry completely before reconnecting it to the power source.



1. INTRODUCTION

The DSPEC[®] jr 2.0 — our fifth-generation integrated gamma spectrometer based on digital signal processing — combines small size, the latest in digital signal processing and filters, and the fastest data-transfer rate available (USB 2.0) with the proven performance of the ORTEC DSPEC[®] line of instruments.

1.1. Why the DSPEC jr 2.0?

New Low-Frequency Rejector (LFR) Filter The Low-Frequency Rejector¹ technology surpasses all signal processing methods for reducing the effects of microphonics and other sources of periodic noise for HPGe and NaI(Tl) spectrometry. This advance in engineering senses the presence of noise that degrades spectral resolution and minimizes the effect by digital filtering.

As the leader in the development of mechanically-cooled HPGe systems, ORTEC is at the forefront in developing optimized electronics for these applications. The result of our research and development projects for applications using mechanically-cooled HPGe systems is a digital filter that can reduce the effect of virtually any source of periodic noise, whether from microphonics, ground loops, or other sources. With the DSPEC jr 2.0, we bring this technology to your laboratory in an economical package.

Zero Dead-Time Correction The DSPEC jr 2.0 features our innovative ZDT[™] mode of operation, an alternative to the classical “extended-live-time clock.” The ZDT method produces accurate results in *all* situations and overcomes completely some of the shortcomings of extended live-time methods. Moreover, the new ZDT method overcomes some limitations in previous “loss-free” dead-time correction methods. Most notably, the ZDT mode does not require any manual adjustments and is capable of computing the statistical uncertainty of the corrected spectrum.²

Single-Cable Connection to Detectors DSPEC jr 2.0 uses the unique ORTEC Detector Interface Module (DIM) for single-cable connection between the DSPEC jr 2.0 and the detector. The DIM is designed to supply bias close to the detector so the cable carries only signal and low-voltage power — no longer is high-voltage bias, and its associated dangers, carried over long distances.

SMART-1[™] Support Detectors equipped with the SMART-1 technology have their recommended bias values preset at the factory. No more shuffling through paperwork or looking for tags on the detector to find the right bias setting. Simply turn on the electronics and the SMART-1 detector senses the detector temperature and applies the right high-voltage bias.

¹Patent pending.

²Patent number 6,327,549.

Our SMART-1 detectors also allow modern instruments like the digiDART and DSPEC jr 2.0 to monitor and display detector state of health (SOH) during acquisition, including detector temperature, preamplifier power, bias overrange, and bias on/off state. This continuous SOH monitoring ensures the integrity of the acquired data. A quick check of the SOH flag in the SMART-1 detectors shows if any parameter deviated from specification during the measurement. This is vitally important for environmental samples that must be counted for long periods of time and regulatory-driven samples where chain-of-custody integrity means everything.

High-Speed USB Interface The DSPEC jr 2.0 is plug-and-play, so installation is simple, and is fully backward-compatible with lower-speed USB connections. A nearly unlimited number of DSPEC jr 2.0s (as well as any combination of other ORTEC USB instruments) can be connected to the same computer using USB hubs. As an ORTEC CONNECTIONS instrument, DSPEC jr 2.0 works in both standalone and networked configurations.

Sample Changer Connections and Controls Improve your laboratory's productivity with the integrated sample changer connections and controls.

Dynamic Display DSPEC jr 2.0 displays the instrument ID, name, preset count conditions, current live and real time, dead-time percentage (if active), input count rate, HV status and value, and the serial number for SMART-1 detectors. The display is an easy-to-read, backlit LCD.

Desktop Housing The DSPEC jr 2.0, with the same small footprint as its predecessor, the DSPEC jr, sits right on the desktop. Lightweight but rugged, multiple DSPEC jr 2.0s can be stacked on top of one another via their interlocking cases without fear of sliding or tipping. Use a USB hub to quickly connect multiple instruments to the computer.

The DSPEC jr 2.0 also offers these features:

- Highly stable peak shape and peak position with temperature and count rate, a hallmark of our DSPEC family of MCBs.
- Optimize detector performance for a given application from the computer using the InSight™ Virtual Oscilloscope.
- ORTEC's easy automatic pole-zero adjustment³ and automatic baseline restorer.⁴

³Patent number 5,872,363.

⁴Patent number 5,912,825.

- Highly accurate Gedcke-Hale extended live-time correction method.⁵

1.2. The Low Frequency Rejector (LFR) Filter

In designing an MCB that can be used in conjunction with mechanical coolers, ORTEC has developed a new digital filter, the Low Frequency Rejector (LFR) filter,⁶ capable of correcting the pulse output signal for change in the baseline caused by cooler-induced microphonics. In many ways digital filters are easier to understand than their analog counterparts. Figure 1 shows the voltage step output produced at the preamplifier by the collection of charge produced by absorption of a gamma-ray and the resulting trapezoidal weighting function in a digital spectrometer. The difficulty in the measurement is to precisely determine the height of the step pulse because the baseline contains noise. A fairly obvious estimate of the step signal is obtained by averaging the digitized samples of the signal before and after the step. M samples immediately after the event are first ignored, to allow for a maximum rise time of M times the sample interval. N samples of the baseline prior to the step pulse are averaged and then subtracted from the average of N samples taken after the step pulse. This simple procedure produces a trapezoidal weighting function with a rise time of N sample intervals and a flat top of M sample intervals. The maximum value of the trapezoid output, occurring at the end of the flat top, is the best estimate of the step height and therefore the gamma-ray energy. With a proper selection of M and N , this filter is very nearly the optimum filter for a system with noise arising only from the detector leakage (parallel noise) and the FET current (series noise).

The trapezoidal filter is essentially independent of dc offsets, since the averaging and subtracting removes the dc component of the signal. Unfortunately, it is just as sensitive as analog filters to slowly varying signals such as those produced in microphonic noise.

Figure 1 shows the output of the trapezoidal filter is equal to the slope of the baseline signal multiplied by the full width at half maximum (FWHM) of the trapezoid. If a step pulse were to be measured on such a baseline, the filter output value would be too great by an error equal to the difference between the average values A_1 and A_2 . Since the microphonic noise component in a signal is approximately a sine wave, as illustrated in Fig. 2,

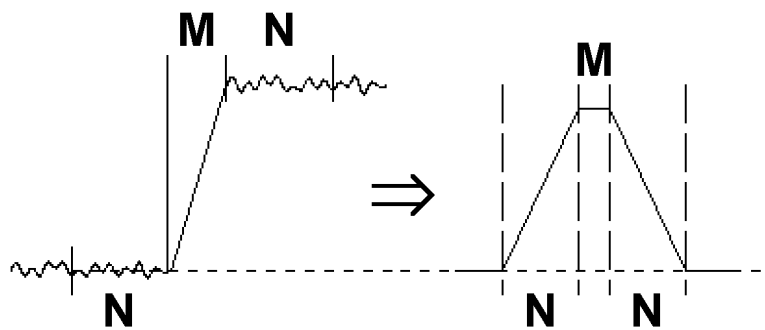


Figure 1. Typical Trapezoidal Weighting Function (right) Arising from Detector Preamplifier Output Signal (left).

⁵Ron Jenkins, R. W. Gould, and Dale Gedcke, *Quantitative X-Ray Spectrometry* (New York: Marcel Dekker, Inc.), 1981, pp. 266–267.

⁶Patent pending.

the error induced can be positive, negative, or zero. This error signal adds to the width of the spectral lines, appearing as degraded resolution performance from the detector, and can in many cases be a dominant noise source, especially at lower energies.

The ORTEC LFR filter removes most of the microphonic noise by estimating the microphonic-induced error signal on a pulse-by-pulse basis and subtracting the estimated error signal from the trapezoid output. As noted above, the error signal is proportional to the slope of the baseline during the energy measurement. If the slope is known, then so is the error introduced by the microphonics. An excellent estimate of the slope can be obtained by using the trapezoidal filter itself to measure the slope both before and after the energy measurement. Since the digital filter is always sampling the input signal, it is only necessary to store (1) the values measured before the event is detected, (2) the gamma-ray energy measurement, and (3) the values measured after the event is detected. The modified trapezoidal digital filter for LFR from an InSight Virtual Oscilloscope trace is shown in Fig. 3. A suitably weighted and averaged value of the before and after slope measurement is then subtracted from the energy measurement producing a measurement essentially free of microphonic noise. Although the inherent increase in the pulse processing time increases the dead time of the system, the resolution can be greatly enhanced when periodic noise is present.

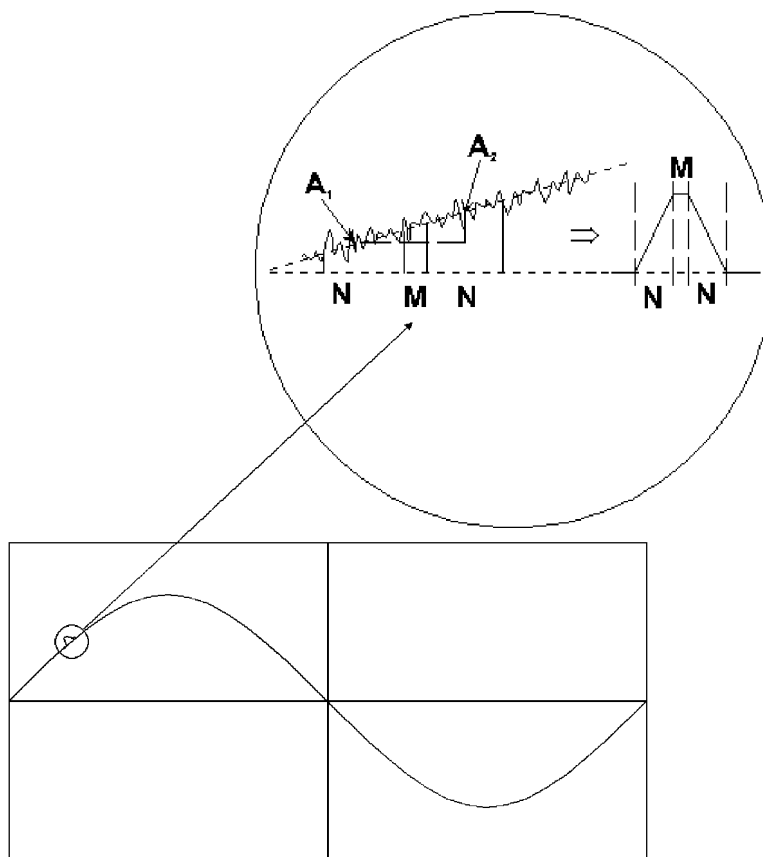


Figure 2. Example of Weighting Function Output Resulting from the Positive Slope Due to Low-Frequency Noise (shown as a sine wave).

Figure 4 shows the calculated frequency response of the typical trapezoid filter (dashed line) and the LFR-enabled filter (solid line). The graph shows the output of the systems for a typical 10- μ s rise time setting of both filters. The x-axis is the frequency of the noise in the system. At 3 kHz, the improvement in response to the noise is roughly an order of magnitude with the LFR-enabled filter.

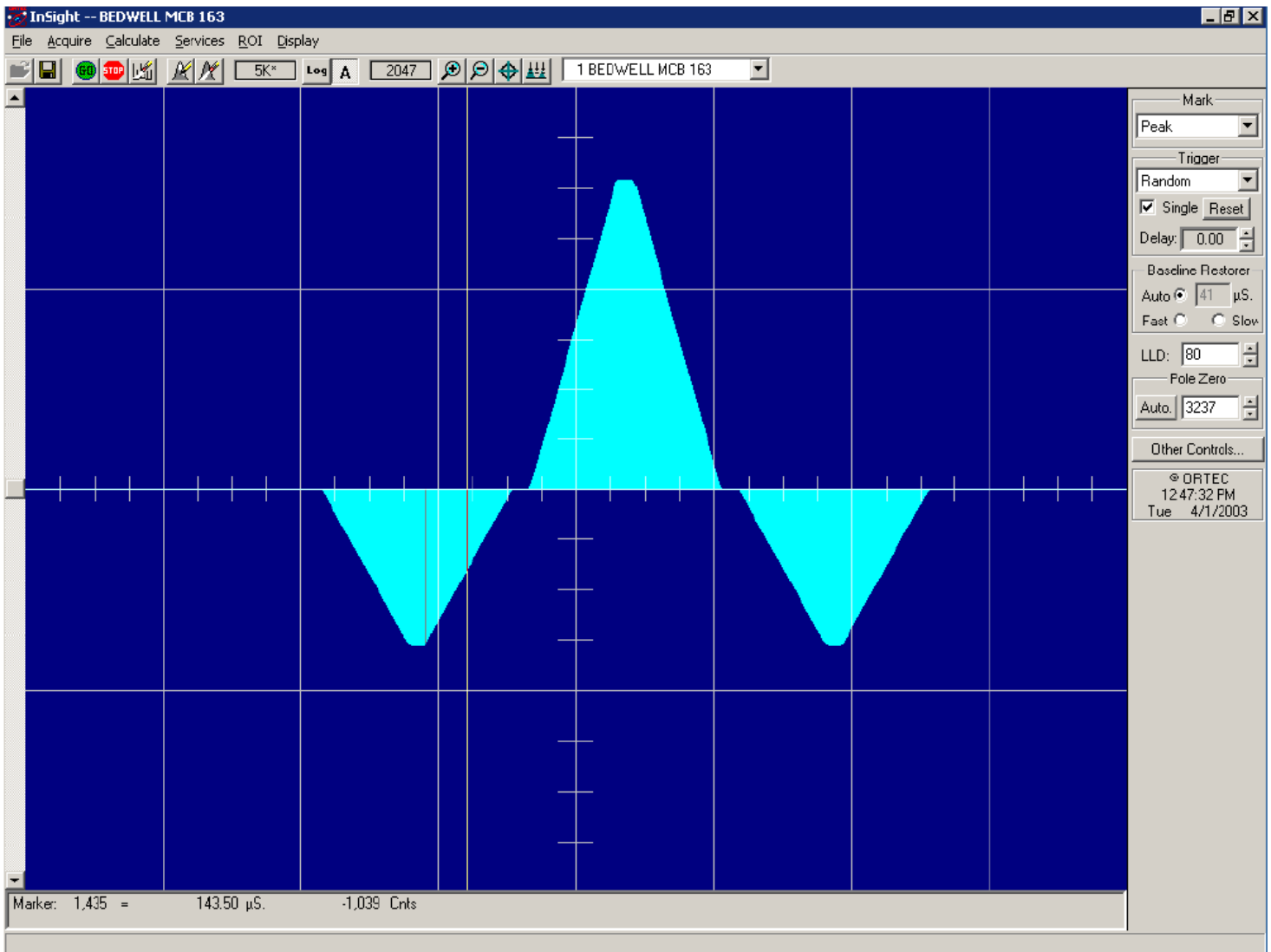


Figure 3. LFR-Enabled Digital Filter.

To switch to LFR mode, click the Amplifier PRO tab under **Acquire/MCB Properties...**, and mark the **Low Frequency Rejector** checkbox (see Section 2.3.3). Note that you *cannot* optimize or pole-zero the DSPEC jr 2.0 while in LFR mode. The Optimize feature should be used with the LFR filter off (checkbox unmarked). Subsequent measurements can then be taken with the LFR filter on.

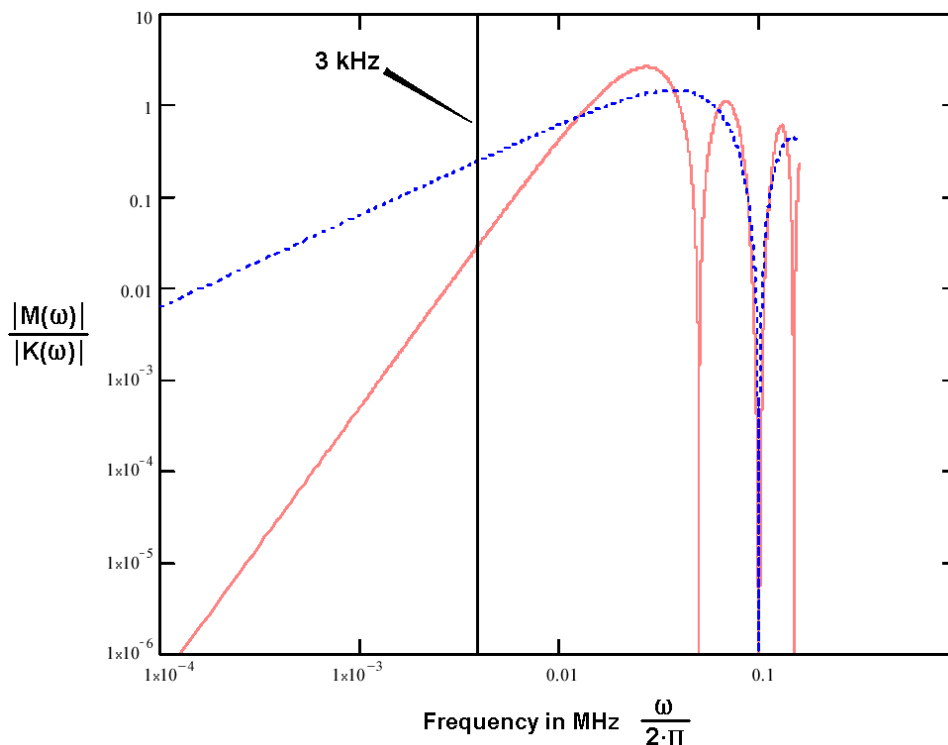


Figure 4. Theoretical Output of Typical (dashed line) and LFR (solid line) Weighting Functions Using 10-microsecond Rise Times.

1.3. Ballistic Deficit and Adjusting the Flattop Duration

In germanium detectors it takes a variable amount of time to collect all of the charge released in the detector diode when a gamma ray deposits energy in the detector. The duration of this charge collection time depends on the dimensions of the detector, the geometry of the electrodes, and the points at which energy is deposited in the detector. A small, planar detector has charge collection times that vary from 50 ns to 100 ns, whereas a large coaxial detector is characterized by charge collection times that vary from 100 ns to 700 ns. The variability of the charge collection time within a specific detector is the source of the resolution degradation described by the *ballistic deficit effect*.

The ballistic deficit becomes a significant source of resolution degradation when very short shaping times are selected in order to reduce dead time and improve the high counting-rate limit. For a digital filter having the shape of a symmetrical triangle in the time domain, the output pulse begins to rise as soon as the gamma ray is detected. It continues to rise until it reaches a peak amplitude at a time specified by the currently selected rise/fall time (this is the **Rise Time** parameter entered on the Amplifier 2 tab under **Acquire/MCB Properties...**; see Section 2.3.2). Beyond this peak-amplitude time, the pulse falls back to the baseline to allow a subsequent gamma ray to be processed. If all the charge has not been collected by the detector by the design-

nated time for peak amplitude, there will be a deficit in the measured peak amplitude and a broadening of the pulse width, all caused by the slow charge collection. The deficit in amplitude is called the *ballistic deficit*. Obviously, events that result in a faster charge collection time will suffer less deficit and less increase in pulse width than those yielding a slower charge collection time, even though the deposited energy was identical. Thus, the ballistic deficit resulting from variable charge collection times broadens the energy resolution for that gamma ray.

If the longest charge collection time is negligible compared to the rise time of the filter pulse, the ballistic deficit will be imperceptible, and the energy resolution will not be degraded. Thus, at the 10- to 20- μ s rise times typically selected for optimum signal-to-noise ratio (i.e., minimum peak FWHM at low energies) the ballistic deficit problem can be ignored.

Long rise times create higher dead times and depress the maximum counting-rate limit. If it is necessary to accept higher counting rates, the rise/fall times must be shortened accordingly. For this case, the DSPEC jr 2.0 includes a flattop feature for the filter that can eliminate the resolution broadening caused by ballistic deficit. Instead of a symmetrical triangle with a sharp point at the peak amplitude, the rising and falling edges are separated by a flattop to form a trapezoid. The width of the flattop is adjusted to be long enough to match the longest charge collection time for the detector employed. This allows time for the longer-charge-collection pulses to reach the same maximum pulse amplitude as the faster-charge-collection pulses from gamma rays of the same energy. Consequently, the ballistic deficit is eliminated, and the energy resolution is dramatically improved at these short pulse widths.

Note that the selection of shorter pulse widths inevitably degrades the signal-to-noise ratio compared to the optimum achieved at longer pulse widths. Thus, operating at shorter pulse widths will compromise the energy resolution of low-energy gamma rays, for which the preamplifier noise makes a significant contribution to the energy resolution. The signal-to-noise degradation is independent of the ballistic deficit effect.

The flattop and other shaping controls are on the Amplifier 2 tab under **Acquire/MCB Properties...**; see Section 2.3.2 for a more detailed discussion.

1.4. Zero Dead-Time (ZDT) Mode

An *extended live-time clock* increases the collection time (real time) of the acquisition to correct for input pulse train losses incurred during acquisition due to system dead time. This corrected time value, known as the live time, is then used to determine the net peak count rates necessary to determine nuclide activities.

As an example, consider the case where the spectrometry amplifier and ADC are 60% dead during the acquisition. the elapsed real time will be:

$$\begin{aligned}
 \textit{Real Time} &= \left(\frac{\textit{Live Time}}{1 - 0.60} \right) \\
 &= \left(\frac{\textit{Live Time} \times 100\%}{100\% - \% \textit{Dead Time}} \right)
 \end{aligned}$$

If the N counts in the gamma-ray peak in the spectrum are divided by the elapsed live time, the resulting counting rate, $N / \textit{Live Time}$, is now corrected for dead-time losses. The standard deviation in that counting rate is $\sqrt{N} / \textit{Live Time}$.

Unfortunately, extending the counting time to make up for losses due to system-busy results in an incorrect result *if the gamma-ray flux is changing as a function of time*. If an isotope with a very short half-life is placed in front of the detector, the spectrometer might start out with a very high dead time, but the isotope will decay during the count and the dead time will be zero by the end of the count. If the spectrometer extends the counting time to make up for the lost counts, it will no longer be counting the same source as when the losses occurred. As a result, the number of counts in the peak will not be correct.

When a supported ORTEC MCB operates in ZDT⁷ mode, it adjusts for the dead-time losses by taking very short acquisitions and applying a correction in *real time* — that is, as the data are coming in — to the number of counts in the spectrum. This technique allows the gamma-ray flux to change while the acquisition is in progress, yet the total counts recorded in each of the peaks are correct. The resulting spectrum has no dead time at all — in ZDT mode, the *data* are corrected, not the acquisition time. Thus, the net counts in a peak are divided by the real time to determine the count rate.

ZDT mode has a unique feature in that it can store both the corrected spectrum and the uncorrected spectrum, or the corrected spectrum and the uncertainty spectrum. Therefore, supported MCBs allow you to choose between three **ZDT Mode** settings on the ADC tab under **MCB Properties...: Off, NORM_CORR, and CORR_ERR**.

Table 1 shows which spectra are collected in the three possible ZDT modes.

⁷Patent number 6,327,549.

Table 1. ZDT Modes.

Mode	Uncorrected Spectrum	ZDT Corrected Spectrum	ZDT Error Spectrum
Off (ZDT Disabled)	Yes	No	No
NORM_CORR (ZDT-LTC Mode)	Yes	Yes	No
CORR_ERR (ZDT-ERR Mode)	No	Yes	Yes

1.4.1. Off — Uncorrected Spectrum Only

In this mode, only the uncorrected spectrum (live time and real time with dead-time losses) — also called the *live-time-corrected* or *LTC* spectrum — is collected and stored in the .SPC file. The LTC spectrum can be used to determine exactly how many pulses at any energy were processed by the spectrometer. The corrected spectrum gives the best estimate of the total counts that would have been in the peak if the system were free of dead-time effects. The uncertainty spectrum can be used to calculate the counting uncertainty, channel by channel, in the corrected spectrum.

NOTE When the spectrometer is placed in ZDT mode, the throughput of the instrument is reduced somewhat as extra processing must be done on the spectrum; therefore, if the gamma-ray flux is not changing as a function of time, but absolute highest throughput is desirable, you might wish to store only the LTC spectrum in the MCB memory.

1.4.2. NORM_CORR — ZDT and Uncorrected Spectra Stored

When the ZDT mode is set to **NORM_CORR**, the two spectra stored are the LTC spectrum and the ZDT spectrum (corrected for the dead-time losses; real time only). Unfortunately, in the analysis of the ZDT spectrum, the uncertainty of the measurement cannot be determined using either spectrum.

NOTE This mode is not useful for quantitative analysis if the counting rate varies significantly during the measurement time, particularly if the user desires an accurate counting rate and standard deviation calculation. *When you select the NORM_CORR mode, the spectroscopy software ignores the ZDT spectrum and analyzes the LTC spectrum as it would for the Off ZDT mode.*

1.4.3. CORR_ERR — ZDT and Error Spectra Stored

In the **CORR_ERR** mode, the estimation of the statistical uncertainty is stored in place of the LTC spectrum, and is referred to as the *error spectrum* (ERR). In this mode, the ZDT spectrum

is used to measure the counts in a peak, and the error spectrum is used to determine the uncertainty of the measurement made in the corrected spectrum.

For example, if the area of a peak is measured in the corrected spectrum by summing channels 1000 to 1100, the variance of the measurement can be determined by summing the counts in channels 1000 to 1100 in the error spectrum. Or, shown another way, the counts in channel i can be expressed as $N(i) \pm \sqrt{V(i)}$ with a 1-sigma confidence limit, where N is the corrected spectral data and V is the variance (error) spectral data.

The live time is set to the real time within the analysis engine during the analysis of ZDT spectra.

A **CORR_ERR** spectrum is analyzed⁸ as a regular spectrum most of the time, with a few exceptions as listed below.

- To calculate the peak area uncertainty, the error spectrum is used. If the peak limits are from L and H channels, then the background variance is calculated as:

$$B_{var} = \frac{(B_1/n_1/n_1 + B_2/n_2/n_2)}{4} \times (H - L + 1)^2$$

where:

B_1 = sum of background counts for the channels adjacent to the peak start (low-energy) channel L

B_2 = sum of background counts for the channels adjacent to the peak end (high-energy) channel H

n_1 = the number of low background points ($n_1 = 1, 3, \text{ or } 5$) used

n_2 = the number of high background points ($n_2 = 1, 3, \text{ or } 5$) used

The peak area uncertainty is calculated from:

$$\sigma = \sqrt{G + B_{var}}$$

where G is the sum of counts, from the error spectrum, from channels L to H .

$$\% \text{ error} = \frac{\sigma \text{ (from error spectrum)}}{\text{Area (from ZDT spectrum)}} \times 100$$

⁸Using our gamma-ray spectrum analysis software such as GammaVision® or ISOTOPIC.

- In our WAN and ISOWAN analysis engines, the peak-fitting routine fits all the library peaks as singlets to calculate the peak centroid, peak start and end channels, and peak background. A linear background under the peak is assumed during the peak fitting process.
- The error spectrum is always used to calculate the uncertainties of counts whenever needed. For example, if peak deconvolution is needed, the error spectrum is used to find the best fit for the peak background.

1.4.4. Choosing a ZDT Mode

When the counting rate is essentially constant during the time required to acquire the spectrum, the standard mode — **ZDT Off** — is the preferred mode; only the uncorrected spectrum is collected and stored in the spectrum file. But, if the counting rate varies significantly during the measurement time, the standard mode will not yield the proper dead-time-corrected counting rate. This can be most easily understood by noting that the uncorrected mode compensates for dead-time losses by extending the real counting time. Hence a sample containing both a short-lived high-activity isotope and a long-lifetime lower-activity isotope will experience very high dead-time losses during the first few seconds of the measurement, as the short-lifetime isotope decays rapidly. This high dead time will cause the counting time to be extended after the short-lived isotope has decayed to zero activity, and the system will count the low-activity isotope for the extra time. Consequently, the average activity of the short-lived isotope will be underestimated.

If you anticipate significantly varying counting rates during the time taken to acquire the spectrum, the **CORR_ERR ZDT** mode should be used. The **CORR_ERR** mode corrects for dead-time losses over minuscule time intervals by adding counts to the ZDT spectrum in proportion to the instantaneous ratio of real time to live time. Thus, the dead-time correction can correctly track rapidly changing counting rates. The **CORR_ERR** mode should be used whenever the counting rate might change significantly during the measurement time. In addition to the rapidly decaying isotope example above, the **CORR_ERR** mode should be used when monitoring cooling water flow from a nuclear reactor. The **CORR_ERR** mode accommodates brief bursts of high-activity in the water flowing past the gamma-ray detector. Both the corrected and error spectra are stored in the resulting spectrum file.

Note that the counts in the ZDT spectrum must be divided by the elapsed REAL time to compute the dead-time corrected counting rate. It is important to note that the standard deviation in the N_{ZDT} counts in a gamma-ray peak in the ZDT spectrum is not $\sqrt{N_{ZDT}}$. Instead the standard deviation is obtained from the N_{ERR} counts in the same peak ROI in the accompanying error spectrum.

The standard deviation in this case is $\sqrt{N_{ERR}}$. And the standard deviation in the computed counting rate, $\sqrt{N_{ZDT}} / \text{Real Time}$, is $\sqrt{N_{ERR}} / \text{Live Time}$.

1.4.4.1. The NORM_CORR Diagnostic Mode

Why is there a **NORM_CORR** mode, and why should you avoid using it? This mode simultaneously collects the ZDT spectrum and the conventional uncorrected spectrum. It is useful for demonstrating that the counts in the uncorrected spectrum divided by the live time is the same counting rate as the counts in the ZDT spectrum divided by the real time, in the special case of constant counting rate. Because the error spectrum is not collected in **NORM_CORR** mode, the standard deviation in the ZDT counts cannot be calculated if the counting rate is varying. The spectroscopy software provides some protection for users if the **ZDT-LTC** mode is inadvertently selected. In this case, the software ignores the ZDT spectrum and presumes you intended to use the uncorrected spectrum in a constant-counting-rate application.

1.4.4.2. To Summarize

- Use the ZDT **Off** mode when the counting rate is expected to be constant during the time taken to acquire the spectrum.
- Use the ZDT **CORR_ERR** mode when the counting rate is expected to change or might change significantly during the time required to acquire the spectrum.
- Avoid using the **NORM_CORR** mode because the spectroscopy software will default to analyzing the LTC spectrum and will ignore the ZDT spectrum.

1.4.4.3. More Information

- Visit our website or contact your ORTEC representative for more detailed information:
- Application note AN56, “Loss Free Counting with Uncertainty Analysis Using ORTEC’s Innovative Zero Dead Time Technique,” (<http://www.ortec-online.com/pdf/an56.pdf>)
- General gamma spectroscopy technical papers (<http://www.ortec-online.com/papers/reprints.htm#General>).

1.5. DSPEC jr 2.0 SMART-1 HPGe Detector Support

ORTEC’s SMART-1 detector technology is a great advance in the operation of HPGe detectors and is a major enhancement to data and chain-of-custody integrity. The SMART-1 detector has a high-voltage supply included, so the DSPEC jr 2.0 does not contain a high-voltage power

supply. For older detectors, a detector interface module (DIM) is used to supply the HV for the detector.

The SMART-1 detector monitors and reports on vital system functions. Also, its identification serial number can be read by a controller such as the DSPEC jr 2.0. For more security it can save authentication codes written to it and report the code at a later time. The authentication code value is replaced with every start command. At the end of the acquisition, both the serial number and code are read and checked with the values at the start of the acquisition.

ORTEC SMART-1 HPGe detectors monitor the following conditions:

- Preamplifier +/- 24 and +/- 12 V values (read-only)
- Preamplifier voltage out of range (read-only)
- Detector element temperature (read-only)
- Detector high voltage value (read-only)
- Detector high voltage state (on/off)
- Detector overload state (read-only)
- Detector high voltage shutdown state (read-only)
- Detector serial number (read-only)
- Detector authentication code (read/write)

1.5.1. SMART-1 HPGe Detector Construction

In the SMART-1 detector, the controller and high-voltage power supply are contained in a single, small module and are permanently attached to the detector endcap. The cable is strain-relieved and sealed. This eliminates the possibility that the detector will suffer severe damage from moisture leaking into high-voltage connectors. The controller can be positioned in any convenient place. It does not interfere with shielding or other mounting hardware.

1.5.2. Using Older Detectors

For older detectors, a detector interface module (DIM) is used. The DIM is a compact size and can be attached directly to the detector itself, keeping the length of the high-voltage cable to the absolute minimum. The DIM is only needed for non-SMART-1 detector use.

The DSPEC jr 2.0 uses the following DIMs for support of non-SMART-1 detector systems:

- DIM-POSGE For any non-SMART-1, positive-bias, HPGe detector (includes short leads with mating connectors for connecting to existing detector cabling), +500 V to +5000 V.

- DIM-NEGGE For any non-SMART-1, negative-bias, HPGe detector (includes short leads with mating connectors for connecting to existing detector cabling), -500 V to -5000 V.
- DIM-POSNAI For any positive-bias NaI detector (includes short leads with mating connectors for connecting to existing detector cabling), +100 V to +1800 V.
- DIM-296 For any positive-bias NaI detector (with Model 296 ScintiPack tube base/preamplifier/bias supply for NaI detectors with 14-pin, 10 stage photo multiplier tubes), 0 V to 1200 kV.

1.5.3. How State of Health (SOH) is Monitored

The SMART-1 HPGe detector SOH function operates as follows: When the acquisition is started, the DSPEC Pro clears all the bits of the SOH byte in the SMART-1 HPGe Detector memory. During data acquisition, the SMART-1 HPGe Detector monitors the conditions listed above. Should any of these values fall outside a specified range (even if they subsequently return to normal), the relevant SOH bit is set. The bits stay set until cleared externally with the **Acquire/Clear** command in MAESTRO; or the firmware commands CLEAR, CLEAR_ALL, or CLEAR_HV_HEALTH. At the end of the acquisition, the DSPEC Pro reads the SOH and if any bit is set, displays a warning message. If no bits are set, no message is displayed; this means there was no problem during the acquisition. The SOH status is saved with the spectral data in the .SPC file as part of the QA data.

MAESTRO, GammaVision, and other ORTEC programs can monitor the status of the SOH bit for the current spectrum on the Status tab under **Acquire/MCB Properties...** In addition, user-developed programs may read and write the SOH register. Chapter 4 provides the commands for reading and interpreting the SOH settings; see Appendix A for a table of SOH bit definitions.

1.6. Host Computer and Software Requirements

The DSPEC jr 2.0 is completely computer-controlled and can be operated with any suitable ORTEC CONNECTIONS software, including the supplied MAESTRO MCA Emulation Software (A65-BW), communicating via the supplied version of CONNECTIONS. The current version of MAESTRO runs under Microsoft® Windows 8, 7, XP Professional SP3.

1.7. About this Manual

This manual describes the DSPEC jr 2.0, tells how to connect it in a complete spectroscopy system, gives instructions on configuring the hardware settings (such as high voltage, presets,

and gain), and supplies the hardware commands and responses. Complete details on using the control software are in the *MAESTRO Software User's Manual* as well as the manuals for GammaVision[®], ISOTOPIC, and our other spectroscopy software.⁹

⁹For the purposes of this manual, when we refer to MAESTRO, we mean the ORTEC MCA emulator/analysis application you are using (e.g., MAESTRO, GammaVision, ISOTOPIC).

[Intentionally blank]

2. GETTING STARTED

2.1. The DSPEC jr 2.0

2.1.1. Front Panel

Figure 5 shows the DSPEC jr 2.0 front panel.

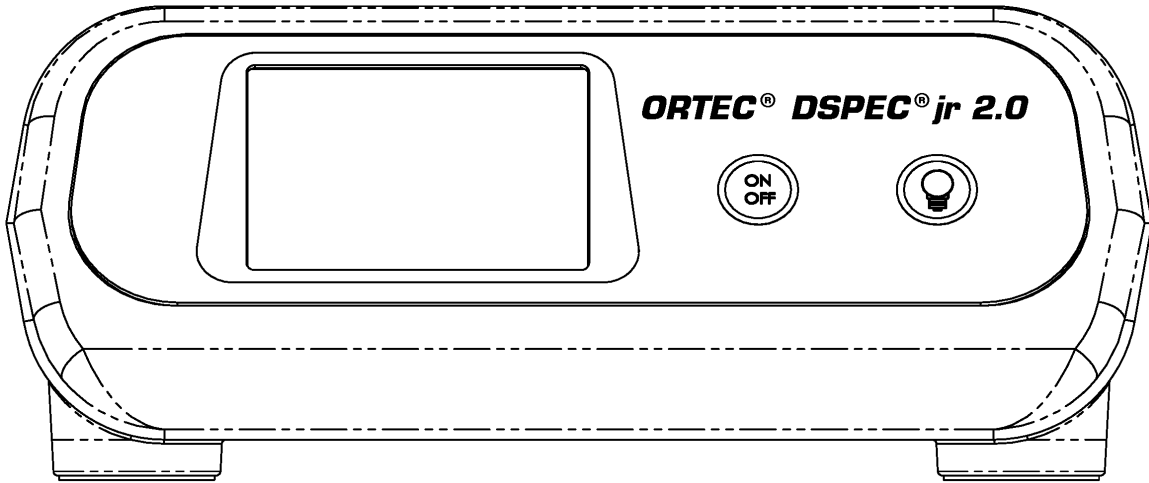


Figure 5. DSPEC jr 2.0 Front Panel.

2.1.1.1. The Display

The DSPEC jr 2.0 has a 240 × 160-pixel LCD display for viewing presets, high-voltage setting and status, stabilizer settings, SMART-1 detector status, and shutdown mode. Figure 6 shows the layout of display for a DSPEC jr 2.0 with a SMART-1 detector.

RT, **RTP**, **LT**, and **LTP** are, respectively, the actual real time, real-time preset, live time, and live-time preset.

DT and **ICR** are the dead time, in percent, and input count rate, in counts per second (CPS).

GainStab and **ZeroStab** show the current setting for the gain and zero stabilizers, respectively.

The next line shows the current high-voltage setting (**HV**); the current high-voltage status (**ON**, **OFF**, **SHDN** [shutdown], or **OVL** [overload]); and the shutdown mode (**TTL**, **ORTEC**, or **SMART**).

RT 36.6	LT 36.6
RTP 200.0	LTP 210.0
DT 0.1	ICR 41
GainStab OFF	ZeroStab OFF
HV 0 V / SHDN	/ SMART
SMART 42-N21741A	/ 92 K
MCB ID 1	
DSPEC JR 2.0 V.002	

Figure 6. The DSPEC jr 2.0 Display Showing Presence of a SMART-1 Detector.

If a SMART-1 detector is attached, the DSPEC jr 2.0 displays a line immediately beneath the high-voltage line; this line is blank for other detector types (compare Figs. 6 and 7). On the left are the word **SMART** and the first eight characters of the SMART-1 detector's serial number. This is the same value returned by the `SHOW_DET_SNUM` command. On the right is the detector temperature in kelvins.

RT 36.6	LT 36.6
RTP 200.0	LTP 210.0
DT 0.1	ICR 41
GainStab OFF	ZeroStab OFF
HV 0 V	/ OVLD / TTL
MCB ID 1	
DSPEC JR 2.0	V.002

Figure 7. The DSPEC jr 2.0 Display for a Non-SMART-1 Detector.

The next line shows the ID number for this DSPEC jr 2.0 as set by the MCB Configuration program and displayed in the Master Instrument List (see the *ORTEC MCB Connections Hardware Property Dialogs Manual* for more information on the MCB Configuration program and the Master Instrument List).

The last line on the display gives the firmware version for this DSPEC jr 2.0.

2.1.1.2. Controls



ON/OFF To power up the DSPEC jr 2.0, press **ON/OFF**. It takes approximately 3 seconds for the display to appear. To turn off the instrument, press **ON/OFF**. The DSPEC jr 2.0 is designed to avoid accidental power-down so acquisition isn't interrupted. The display will ask you to confirm shutdown. Press the backlight button (💡) to power down or **ON/OFF** (Ⓞ) to ignore the shutdown command. This is shown on the display.



Backlight button Press to turn the display backlight on and off.

2.1.2. Rear Panel

Figure 8 shows the rear panel.

The DSPEC jr 2.0 uses an ac/dc adapter. Connect the power supply unit to the instrument's **12–15 V DC** connector.

Attach the SMART-1 HPGe detector or DIM cable to the **DETECTOR** connector.

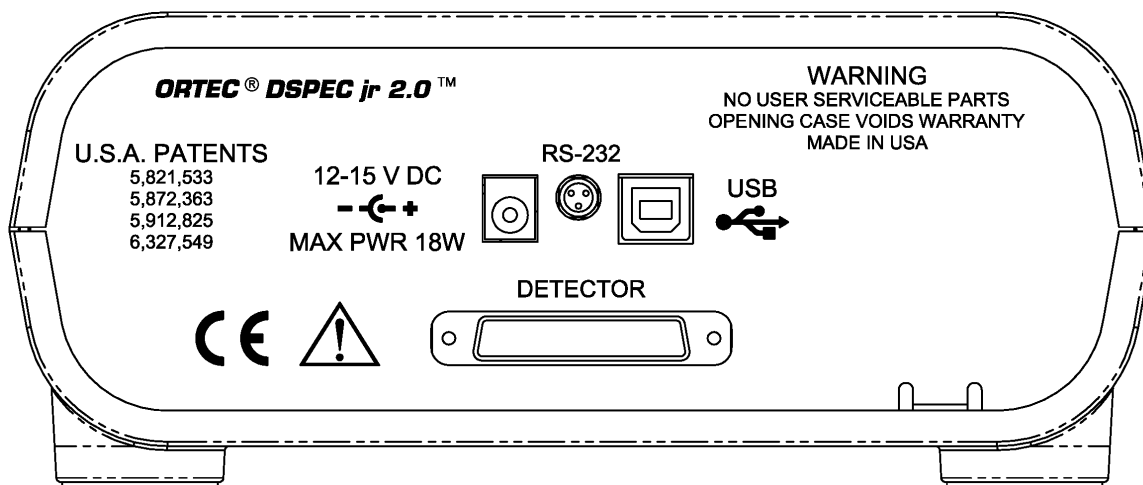


Figure 8. DSPEC jr 2.0 Rear Panel.

Finally, connect the **USB** port to the computer. Note that you can connect to and disconnect from the computer without restarting Windows or MAESTRO.

2.2. Software and Hardware Installation

Installing the DSPEC Jr 2.0 and the MAESTRO MCA Emulation Software takes just four easy steps. You must have Administrator access in Windows to install MAESTRO.

For easiest installation do not connect the DSPEC Jr 2.0 to your computer until MAESTRO has been installed.

- 1) Install the accompanying CONNECTIONS Driver Update Kit (P/N 797230), selecting the **USB-based instruments** family on the install wizard's Instrument Setup page.
- 2) Install the accompanying MAESTRO MCA Emulation Software (A65-BW).
- 3) Connect the DSPEC Jr 2.0 to the USB port on the computer.
- 4) Run the MCB Configuration program to build a list of available ORTEC MCBs.

2.2.1. Step 1: Install the CONNECTIONS Driver Update

The first step is to install the CONNECTIONS Driver Update Kit (P/N 797230) according to its instruction sheet. This software must be installed before MAESTRO can be installed. The update kit's instructions tell how to install CONNECTIONS, enable/disable the drivers for your ORTEC MCB(s), and share ORTEC instruments across a network. On the Instrument Families page, be sure to mark the **USB-based instruments** checkbox, as shown in Fig.9. **Otherwise the DSPEC jr 2.0 will not be able to communicate with the computer and MAESTRO software.** At the end of installation, you will be directed to restart the computer.

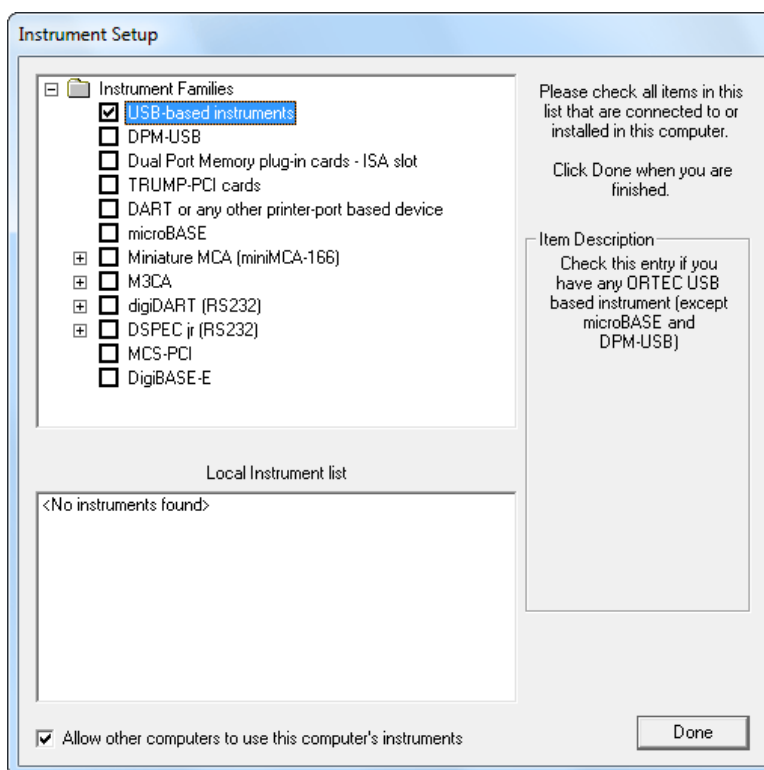


Figure 9. Choose ‘USB-based instruments’.

If you also have other types of MCBs attached to this computer, refer to the installation instructions in the corresponding hardware manuals. Note that you can install device drivers for other types of instruments later, as described in the CONNECTIONS Driver Update Kit instructions.

2.2.2. Step 2: Install MAESTRO

Install MAESTRO according to the instructions in its *User Manual*.

2.2.3. Step 3: Connect the DSPEC jr 2.0 to the Computer

- 1) With the computer powered on, connect the DSPEC jr 2.0 to the computer's USB port.
- 2) Windows will indicate that the DSPEC jr 2.0 has been detected. In Windows 8 and 7, the driver will install without a wizard. In XP, the new hardware installation wizard will open. Click **Next**, indicate you *do not* wish to connect to the internet or the Microsoft website to locate the driver, choose the “automatically locate driver” option, and follow the remaining prompts to completion. When this operation is complete, you are ready to run the MCB Configuration program so that MAESTRO and other CONNECTIONS software can recognize the DSPEC jr 2.0.

2.2.4. Step 4: Run MCB Configuration to Communicate With Your MCBs

IMPORTANT

This is an abbreviated discussion of the operation and use of the MCB Configuration program. We *strongly* recommend that you read the instructions for the CONNECTIONS Driver Update Kit for complete details on the command line arguments that change how the program searches for MCBs, customizing MCB ID Numbers and Descriptions, changing your Windows firewall settings to allow MCB access across a network, enabling additional device drivers, and troubleshooting.

- 1) Make sure the DSPEC jr 2.0 is connected and powered on.
- 2) Connect and power on all other local and network ORTEC instruments that you wish to use, as well as their associated computers. Otherwise, the MCB Configuration program will not detect them during installation. Any instruments not detected can be configured at a later time.
- 3) To start the software, type `mcb` in the “*Search programs and files*” box on the Windows Start menu, then click the **MCB Configuration** search result; or open the Windows Start menu and click **MAESTRO**, then **MCB Configuration**. The MCB Configuration program will locate all of the powered-on ORTEC MCBs on the local computer and the network, and display the list of instruments found (the *Master Instrument List*; Fig. 10). If you wish, you may enter customized instrument ID numbers and descriptions (Section 2.2.4.2). When you close the dialog, any changes you have made to an ID number or description will be written back to the corresponding MCB.

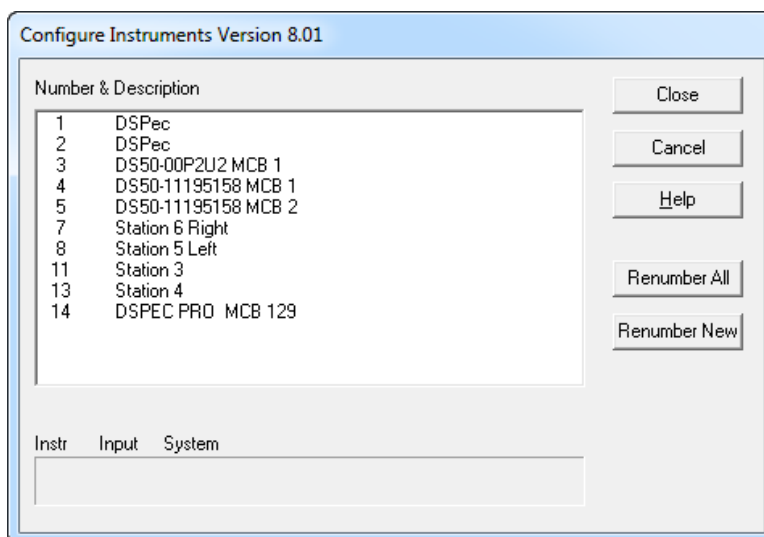


Figure 10. MCB Numbering and Descriptions.

2.2.4.1. Configuring a New Instrument

The first time a new instrument is detected, the dialog shown in Fig. 11 will remind you that all new instruments must be assigned a unique, *non-zero* ID number.¹⁰ Click **OK**. You can either manually change the ID Number and Description as described in the next subsection, or you can click the **Renumber New** button to renumber only the new instruments.



Figure 11. New Instruments Must Have a Non-Zero ID Number.

NOTE *We strongly recommend not using the Renumber All button.* In addition, we strongly recommend *not* renumbering MCBs that “belong” to other users, as this could affect the interaction between their MCBs and their ORTEC software, for instance, if they control their MCBs with .JOB files (e.g., the .JOB file command `SET_DETECTOR 5`), or use the GammaVision or ISOTOPIC spectroscopy applications. See also the NOTE FOR MULTIPLE USERS ON A NETWORK in the next section.

2.2.4.2. Customizing ID Numbers and Descriptions

If you wish, you can change the instrument ID Numbers and Descriptions by double-clicking an instrument entry in the Configure Instruments dialog. This will open the Change Description or ID dialog (Fig. 12). It shows the physical MCB location (read-only), and allows you to change the **ID** Number and **Description**.

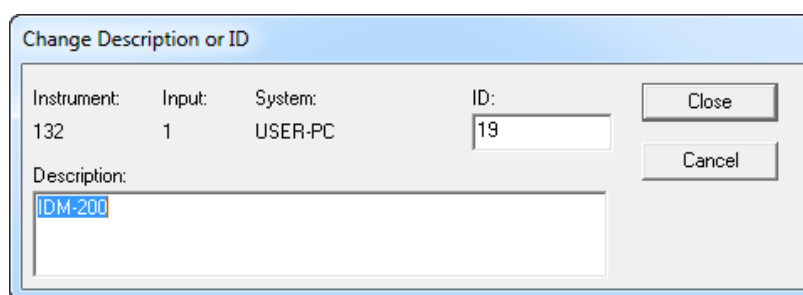


Figure 12. Change MCB Number or Description.

Make the desired changes and click **Close**. Any changes you have made to an ID number or description will then be written back to the corresponding MCB.

¹⁰If this is a first-time installation of ORTEC products, all your instruments will be “new.”

NOTE FOR MULTIPLE USERS ON A NETWORK

There are two ways to reduce the chance that other users will renumber your MCBs:

- Add the **-I** flag to their MCB Configuration command line, as described in the CONNECTIONS Driver Update Kit instructions. This will allow you to assign whatever ID Numbers you wish, regardless of the numbers assigned by other users on your network. (Ideally, everyone using ORTEC instruments on your network should make this change.)
- To prevent others from renumbering your MCBs (or performing any other actions except read-only viewing), password-lock your MCBs with the **MAESTRO Lock/Unlock Detector** command. If you lock a detector that will be controlled by a JOB stream, remember to include the proper password-unlock commands in your **.JOB** file (see the MAESTRO user manual).

If a modified description has already been applied to a particular instrument, you can restore the default description by deleting the entry in the **Description** field and re-running MCB Configuration. After MCB Configuration runs, the default description will be displayed.

2.2.5. Attaching More Than One DSPEC jr 2.0 to the Computer

Once the drivers have been installed for one DSPEC jr 2.0, adding subsequent units is simple.

REMINDER Be sure to run MCB Configuration any time you add new DSPEC jr 2.0s (or other ORTEC MCBs) to your system, *or when you move an instrument from one USB port to another.*

2.2.6. Connecting to and Disconnecting from the Computer

The USB connection allows you to connect DSPEC jr 2.0s to and disconnect them from a USB port without shutting down the computer or USB hub. Note that if MAESTRO is running when you disconnect the DSPEC jr 2.0, you will see a “detector not responding” message on the status line at the bottom of the MAESTRO window. When you reconnect the DSPEC jr 2.0 to the computer, you will have to reselect it from the detector droplist on the Toolbar.

2.3. DSPEC jr 2.0 MCB Properties in MAESTRO

This section discusses the hardware setup dialog you will see within MAESTRO and all other ORTEC CONNECTIONS software (e.g., GammaVision, ISOTOPIC) when you click **Acquire/ MCB Properties...** The DSPEC jr 2.0 is completely software controlled; the MCB Properties dialog contains all of the instrument controls including ADC setup parameters, acquisition presets, amplifier gain adjustments, pole-zero controls, and access to the InSight Virtual Oscillo-

scope. Just move from tab to tab and set your hardware parameters, then click **Close** — it's that easy.

Note that as you enter characters in the data-entry fields, the characters will be underlined until you move to another field or until 5 seconds have lapsed since a character was last entered. During the time the entry is underlined, no other program or computer on the network can modify this value.

2.3.1. Amplifier

Figure 13 shows the Amplifier tab. This tab contains the controls for **Gain**, **Baseline Restore**, **Preamplifier Type**, **Input Polarity**, and **Optimize**.

NOTE Be sure that all of the controls on the tabs have been set *before* clicking the **Start Auto** (optimize) button. The changes you make on most property tabs *take place immediately*. There is no cancel or undo for these dialogs.

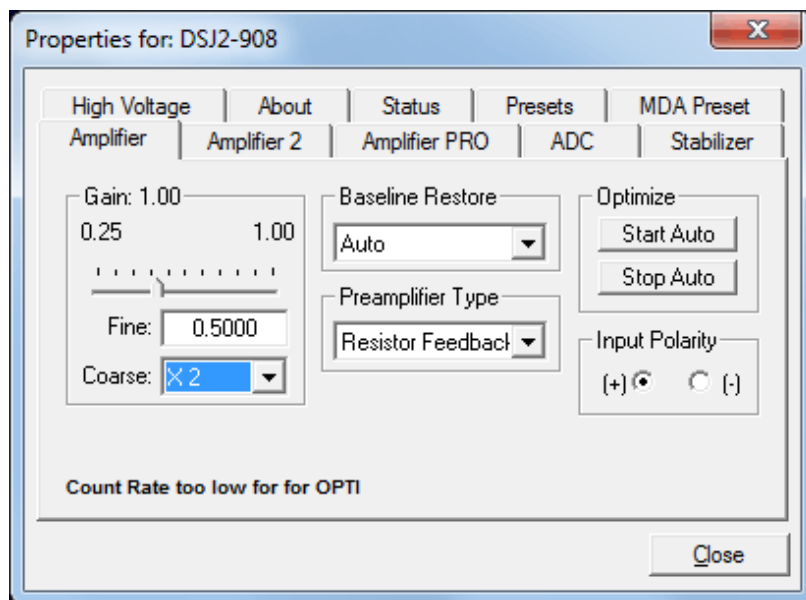


Figure 13. DSPEC jr 2.0 Amplifier Tab.

Gain — Set the amplifier coarse gain by choosing from the **Coarse** droplist, then adjust the **Fine** gain with the horizontal slider bar or the edit box, in the range of 0.45 to 1.00. The resulting effective gain is shown at the top of the **Gain** section. The two controls used together cover the entire range of amplification from 0.45 to 32.

Input Polarity — These buttons select the preamplifier input signal polarity for the signal from the detector. Normally, GEM (p-type) detectors have a positive signal and GMX (n-type) have a negative signal.

Baseline Restore — This is used to return the baseline of the pulses to the true zero between incoming pulses. This improves the resolution by removing low frequency noise from dc shifts or mains power ac pickup. The baseline settings control the time constant of the circuit that returns the baseline to zero. There are three fixed choices (**Auto**,⁴ **Fast**, and **Slow**). The fast setting is used for high count rates, the slow for low count rates. **Auto** adjusts the time constant as appropriate for the input count rate. The settings (**Auto**, **Fast**, or **Slow**) are saved in the

DSPEC jr 2.0 even when the power is off. The time constant can be manually set on the InSight display (see the discussion beginning on page 27).

You can view the time when the baseline restorer is active on the InSight display as a **Mark** region (see the discussion on Marks, p. 29). In the automatic mode, the current value is shown on the InSight sidebar (Fig. 15). For a low-count-rate system, the value will remain at about 90.

Preamplifier Type — Choose **Transistor Reset** or **Resistive Feedback**. Your choice will depend on the preamplifier supplied with the germanium detector being used.

Optimize — The DSPEC jr 2.0 is equipped with both automatic pole-zero logic³ and automatic flattop logic.¹¹ The **Start Auto** (optimize) button uses these features to automatically choose the best pole-zero and flattop tilt settings. Note that if you select **Transistor Reset** as the preamplifier type, the optimization routine does not perform pole zeroes.

During optimization, pole zeroes are performed for several rise-time values, and the DSPEC jr 2.0 cycles through all the rise time values for the determination of the optimum tilt values. As all of the values for all the combinations are maintained in the DSPEC jr 2.0, you do not have to repeat optimization for each possible rise time.

Optimization requires a source with sufficient activity to register between 800 cps and 5000 cps. Arrange the detector in its final configuration. Unmark the LFR checkbox on the Amplifier PRO tab (you cannot optimize with LFR mode enabled; see Section 2.3.3), turn on the HV so the instrument is processing pulses, then place the source on or near the detector endcap. A count rate guidance message on the lower-left of the Amplifier page will help you position the source to deliver the correct count rate for optimization. The **Start Auto** optimization button will remain disabled (gray) until the count rate is suitable. Click it to start.

A series of short beeps indicates optimization is in progress. When optimizing is complete, the beeping will stop. The process can take from 1 to 10 minutes, depending on count rate, but typically takes 5 minutes.

NOTE As with any system, the DSPEC jr 2.0 should be optimized any time the detector is replaced or the **Flattop Width** is changed.

The effect of optimization on the pulse can be seen in the InSight mode, on the Amplifier 2 tab. Note, however, that if the settings were close to proper adjustment before starting optimization, the pulse shape may not change enough for you to see. (In this situation, you also may not notice

¹¹Patent number 5,821,533.

a change in the shape of the spectrum peaks.) The most visible effect of incorrect settings is high- or low-side peak tailing or poor resolution.

2.3.2. Amplifier 2

Figure 14 shows the Amplifier 2 tab, which accesses the advanced DSPEC jr 2.0 shaping controls including the InSight Virtual Oscilloscope mode.

The many choices of **Rise Time** let you precisely control the tradeoff between resolution and throughput; see Section 2.4. This setting affects both the rise and fall times, so changing it spreads or narrows the quasi-trapezoid symmetrically.

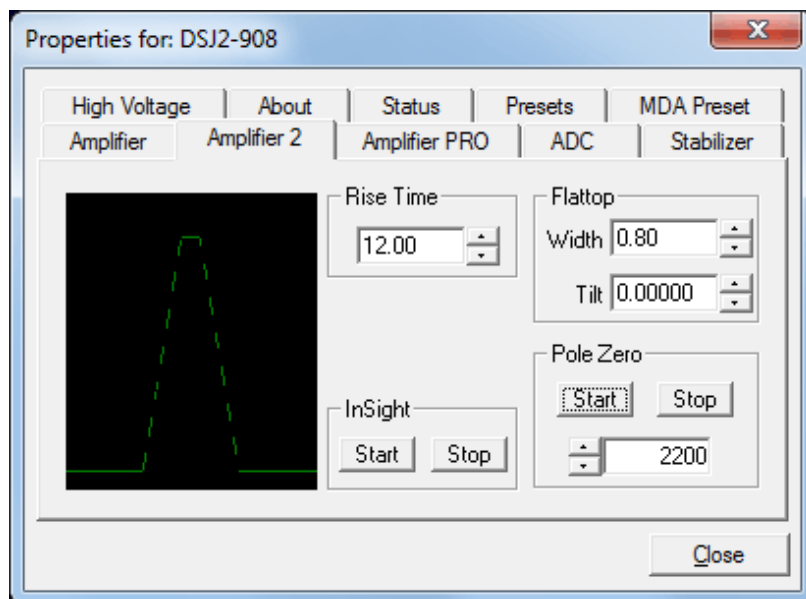


Figure 14. DSPEC jr 2.0 Amplifier 2 Tab.

Use the up/down arrows to set the **Rise Time** from 0.8 to 23.0 μs .

Once the unit has been optimized according to Section 2.3.1, you can use any **Rise Time** without having to re-optimize.

The value of the rise time parameter in the DSPEC jr 2.0 is roughly equivalent to twice the integration time set on a conventional analog spectroscopy amplifier. Thus, a DSPEC jr 2.0 value of 12 μs corresponds to 6 μs in a conventional amplifier. Starting with the nominal value of 12.0, you should increase values of the rise time for better resolution for expected lower count rates, or when unusually high count rates are anticipated, reduce the rise time for higher throughput with somewhat worse resolution.

The **Flattop** controls adjust the top of the quasi-trapezoid. The **Width** adjusts the extent of the flattop (from 0.3 to 2.4 μs). The **Tilt** adjustment varies the “flatness” of this section slightly. The **Tilt** can be positive or negative. Choosing a positive value results in a flattop that slopes downward; choosing a negative value gives an upward slope. Alternatively, the optimize feature on the Amplifier tab can set the tilt value automatically. This automatic value is normally the best for resolution, but it can be changed on this dialog and in the InSight mode to accommodate particular throughput/resolution tradeoffs. The optimize feature also automatically adjusts the pole-zero setting.

The dead time per pulse is approximately $(3 \times \text{Rise Time}) + (2 \times \text{Flattop Width})$.

In the **Pole Zero** section, the **Start** button performs a pole zero at the specified rise time and other shaping values. Unlike the optimize feature, it performs a pole zero for only the one rise time. The pole-zero **Stop** button aborts the pole zero, and is normally not used.

When you are satisfied with the settings, you are ready to acquire data (with the Properties dialog open or closed).

For the more advanced user, the InSight mode lets you directly view all the parameters and adjust them interactively while collecting live data. To access the InSight mode, go to the **Insight** section on the Amplifier 2 tab and click **Start**. The InSight mode is discussed in more detail in the following section. When you are satisfied with the settings, you are ready to acquire data. Once data acquisition is underway, you may wish to return to **MCB Properties...** and click the **Insight** section's **Start** button to adjust the shaping parameters interactively with a “live” waveform showing the actual pulse shape, or just to verify that all is well.

2.3.2.1. InSight Mode

The **InSight** display (Fig. 15) shows the actual sampled waveform in the digital processing units on a reference graticule. The Properties dialog remains active and can be used to change settings while viewing the pulses.

As none of the traditional analog signals are available in the DSPEC jr 2.0, this mode is the only way to display the equivalent amplifier output pulse. Note that at the bottom of the window the marker channel is displayed in units of time.

To exit the InSight mode and return to the PHA display, press <Esc> or go to the **Insight** section on the Amplifier 2 tab and click **Stop**. The PHA mode is set to STOP when you enter the InSight mode.

The Status Sidebar changes from the PHA mode controls to the InSight controls for adjusting the peak display. On the left is a vertical scrollbar for adjusting the vertical offset of the waveform. The value of the offset is shown on the display. Double-clicking the mouse in the scrollbar will set the vertical offset to the vertical value of the channel at the marker position. This lets you conveniently zoom in on a particular part of the waveform (such as the tail for pole-zeroing).

In the **Auto** trigger mode, the display is updated every time a new pulse exceeds the trigger level. To keep a single pulse displayed, select **Single**. Click **Reset** to refresh the display to see the next pulse. There will usually be one or two pulses in the “pipeline” that will be displayed before any change entered will be seen. If the trigger is turned off, the display will be redrawn periodically, even if no pulse is there.

The **Delay** setting is the time delay between the pulse shown on the display and the trigger level crossing. The value of the time delay is shown on the display.

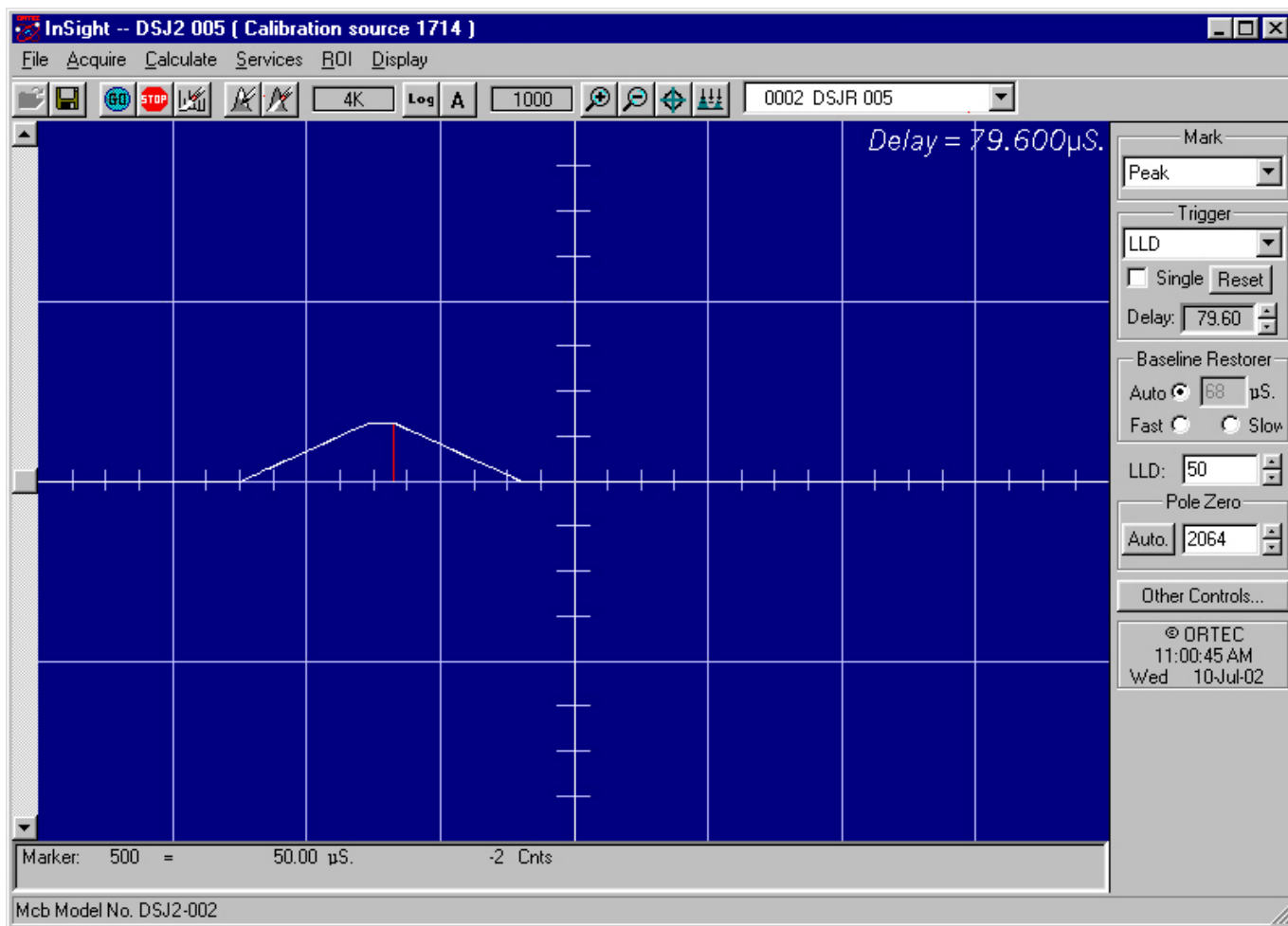


Figure 15. DSPEC jr 2.0 InSight Mode.

Just as for the PHA mode display, the vertical scale can be adjusted with the vertical adjustments. The display can be set to Log mode, but the peak shapes do not have a familiar shape in this display. The Auto mode will adjust the vertical scale for each pulse. The pulse is shown before the amplifier gain has been applied, so the relation between channel number and pulse height is not fixed.

The horizontal scale extends from 16 to 256 channels. The display is expanded around the marker position which means that in some cases the peak will disappear from the display when it is expanded.

The display can be switched from the DSPEC jr 2.0 to another detector or the buffer. In this case the other detector will be shown in the mode selected for it. The buffer will always be shown in PHA mode. The display will return to the InSight mode when you return to the first

DSPEC jr 2.0. If you exit the program with the DSPEC jr 2.0 in InSight mode, it will be in InSight mode on the next startup.

The display can include a **Mark** to indicate one of the other signals shown in Fig. 16. The Mark is a solid-color region displayed similarly to that of an ROI in the spectrum. This Mark can be used to set the timing for the gate pulse. It can also be used to set the shaping times and flattop parameters to get the best performance. For example, suppose you want to get the best resolution at the highest throughput possible. By viewing the pulses and the pileup reject marker, you can increase or decrease the rise time to obtain a minimum of pileup reject pulses.



Figure 16. Mark Display Selection.

Mark Types

For the **Mark**, choose either “points” or “filled” (to the zero line) display. This is controlled by the selection in the **Display/Preferences** menu item. That choice does not affect the PHA mode choice. The colors are the same as for the PHA mode.

None	No channels are marked in the display.
PileUpReject	The region marked indicates when the PUR circuit has detected pileup and is rejecting the marked pulses.
NegBLDisc	This shows when the negative baseline discriminator has been triggered. Typically this signal only marks the TRP reset pulse. The signal is used internally in the live-time correction, baseline restoration, and pile-up rejection circuits.
BaseLineR	This shows when the baseline restorer is actively restoring the baseline.
PosBLDisc	This shows when the positive baseline discriminator has been triggered. The signal is used internally in the live-time correction, baseline restoration, and pile-up rejection circuits.
Busy	When the DSPEC jr 2.0 busy signal is active, Busy shows in the Mark box. It represents the dead time.
Gate	This shows when the gate signal is present on the gate input connector. If the Gate mode on the ADC tab (see Fig. 18) is set to Off , then all regions are marked. If the mode is set to Coincidence , then the marked region must overlap the pulse peak (that is, must start before the beginning of the flattop

and stop after the end of the flattop) for the pulse to be counted. If the mode is set to **Anticoincidence**, then the marked region will show the pulses that are accepted. That is, the rejected peaks will not be marked. Simply put, in all modes the accepted peaks are marked.

Peak This is the peak detect pulse. It indicates when the peak detect circuit has detected a valid pulse. The Mark occurs about 1.5 μ s after the pulse maximum on the display.

On the lower right of the InSight display are the shaping parameter controls. The controls are split into two groups, and the **other controls...** button switches between them.

One group includes **Rise Time**, **Flattop**, **Tilt**, and the **Optimize** button. The **Rise Time** value is for both the rise and fall times; thus, changing the rise time has the effect of spreading or narrowing the quasi-trapezoid symmetrically.

The **Flattop** controls adjust the top of the quasi-trapezoid. The **Width** adjusts the extent of the flattop (from 0.3 to 2.4 μ s). The **Tilt** adjustment varies the “flatness” of this section slightly. The **Tilt** can be positive or negative. Choosing a positive value results in a flattop that slopes downward; choosing a negative value gives an upward slope. Alternatively, **Optimize** can set the tilt value automatically. This value is normally the best for resolution, but it can be changed on this dialog and in the InSight mode to accommodate particular throughput/resolution tradeoffs. The **Optimize** button also automatically adjusts the pole-zero setting.

2.3.3. Amplifier PRO

This tab (Fig. 17) contains the LFR filter control, which is discussed in detail in Section 1.2. To enable **Low Frequency Rejector** mode, mark the checkbox. Unmark the checkbox to turn off the LFR filter.

NOTE You *cannot* optimize or pole-zero the DSPEC jr 2.0 while in LFR mode. The **Optimize** feature should be used with the LFR filter off. Subsequent measurements can then be taken with the LFR filter on.

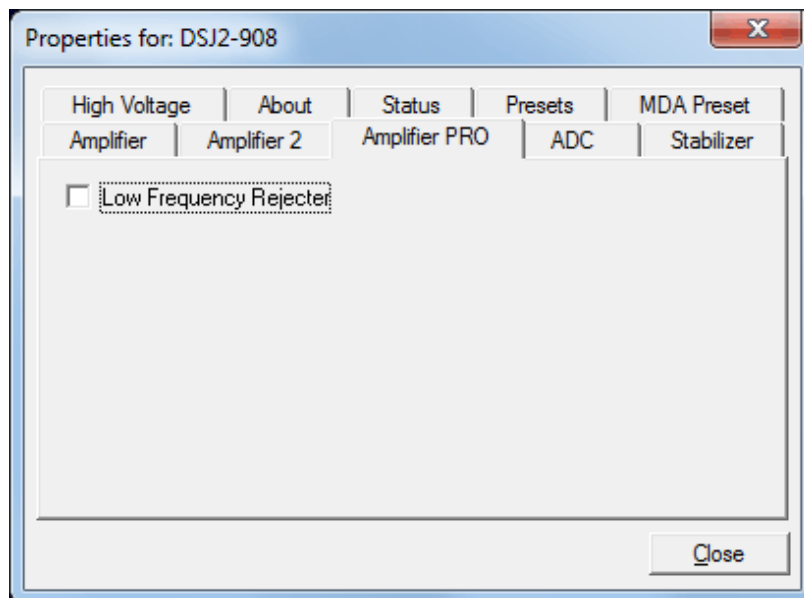


Figure 17. DSPEC jr 2.0 ADC Tab.

2.3.4. ADC

This tab (Fig. 18) contains the **Gate**, **ZDT Mode**, **Conversion Gain**, **Lower Level Discriminator**, and **Upper Level Discriminator** controls. In addition, the current real time, live time, and count rate are monitored at the bottom of the dialog.

Gate — This control allows you to select a positive TTL logic level gating function. With gating **Off**, no gating is performed (that is, all detector signals are processed); with gating in **Coincidence** mode, a gating input signal *must be* present at the proper time for the conversion of the event; in **Anticoincidence** mode, the gating input signal *must not be* present for the conversion of the detector signal. The gating signal must occur prior to and extend 500 ns beyond peak detect (peak maximum).

ZDT Mode — See Section 1.4 for a detailed discussion of this feature. Use this droplist to choose the **Off** (LTC spectrum only) or **CORR_ERR** (ERR and ZDT spectra) mode.¹² If a ZDT mode is selected, both spectra are stored in the same spectrum (.SPC) file. If you do not need the ZDT spectrum, you should select **Off**.

In MAESTRO, the display can show either of the two spectra. Use <F3> or **Acquire/ ZDT Display Select** to toggle the display between the two spectra. In the Compare mode, <F3> switches both spectra to the other type and <Shift+F3> switches only the compare spectrum. This allows you to make all types of comparisons.

Conversion Gain — This sets the maximum channel number in the spectrum. If set to 16384, the energy scale will be divided into 16384 channels. The conversion gain is entered in powers of 2 (e.g., 8192, 4096, 2048). The up/down arrow buttons step through the valid settings for the DSPEC jr 2.0.

Upper- and Lower-Level Discriminators — The **Lower Level Discriminator** sets the level of the lowest amplitude pulse that will be stored. This level establishes a lower-level cutoff by

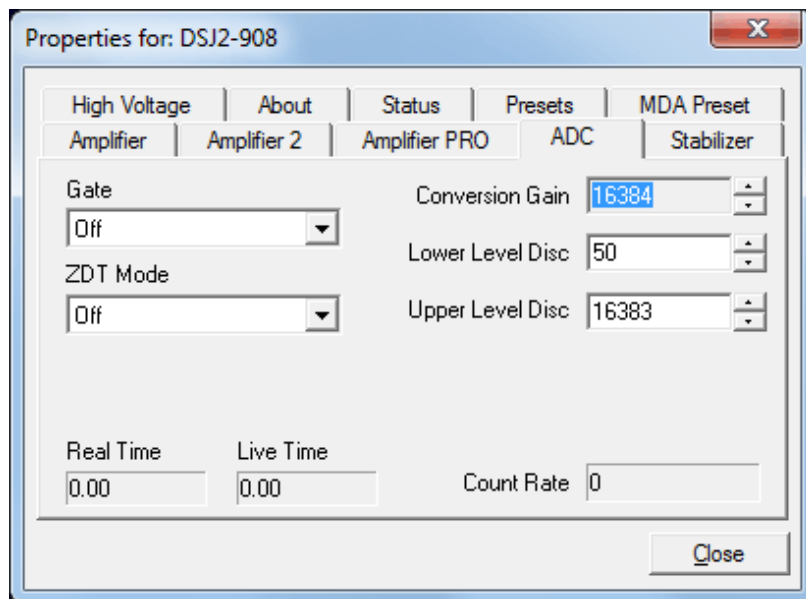


Figure 18. DSPEC jr 2.0 ADC Tab.

¹² The NORM_CORR (LTC and ZDT) mode is typically not used; see Section 1.4.2.

channel number for ADC conversions. The **Upper Level Discriminator** sets the level of the highest amplitude pulse that will be stored. This level establishes an upper-level cutoff by channel number for storage.

2.3.5. Stabilizer

The Stabilizer tab (Fig. 19) lets you adjust and monitor the zero and gain stabilizers (which are discussed in detail in the MAESTRO user manual).

The value in each **Adjustment** section shows how much adjustment is currently applied. The **Initialize** buttons set the adjustment to 0. If the value approaches 90% or above, the amplifier gain should be adjusted so the stabilizer can continue to function — when the adjustment value reaches 100%, the stabilizer cannot make further corrections in that direction. The **Center Channel** and **Width** fields show the peak currently used for stabilization.

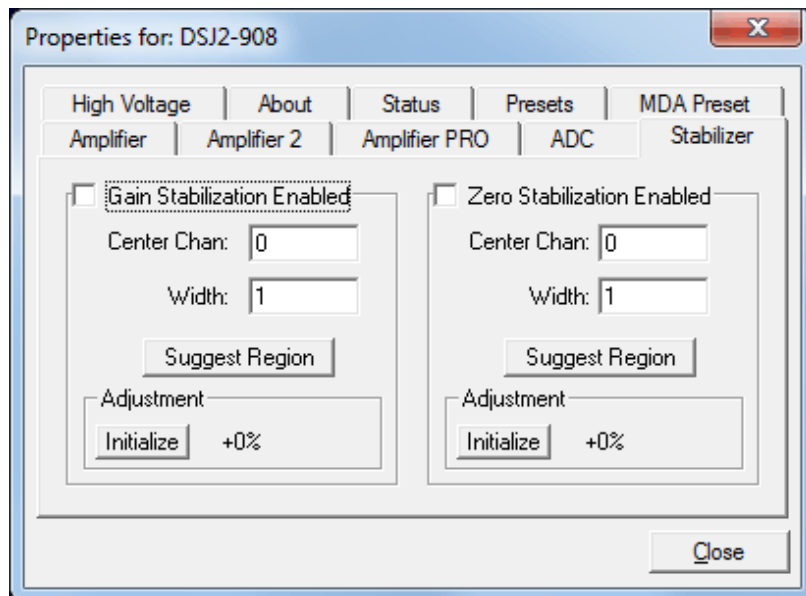


Figure 19. DSPEC jr 2.0 Stabilizer Tab.

To enable the stabilizer, enter the **Center Channel** and **Width** values manually or click the **Suggest Region** button. **Suggest Region** reads the position of the marker and inserts values into the fields. If the marker is in an ROI, the limits of the ROI are used. If the marker is not in an ROI, the center channel is the marker channel and the width is 3 times the FWHM at this energy. Now click the appropriate **Enabled** checkbox to turn the stabilizer on. Until changed in this dialog, the stabilizer will stay enabled even if the power is turned off. When the stabilizer is enabled, the **Center Channel** and **Width** cannot be changed.

2.3.6. High Voltage

Figure 20 shows the High Voltage tab, which allows you to turn the high voltage on or off; set and monitor the voltage; and choose the **Shutdown** mode.

The shutdown can be **TTL**, **ORTEC**, or **SMART**. The **ORTEC** mode is used for all ORTEC detectors except SMART-1 detectors. Use the **SMART** option for those detectors. Check with the detector manufacturer for other detectors. The **TTL** mode is used for most non-ORTEC detectors.

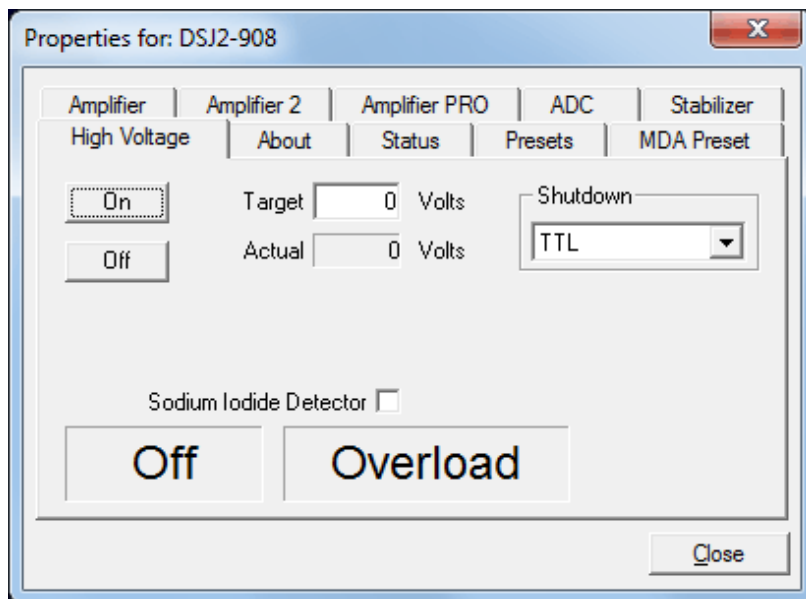


Figure 20. DSPEC jr 2.0 High Voltage Tab.

The polarity is determined by the DIM or SMART-1 module, which also supplies the bias voltage. The recommended HV for SMART-1 is displayed on the dialog. For other detectors, see the detector manual or data sheet for the recommended voltage.

Enter the detector high voltage in the **Target** field, click **On**, and monitor the voltage in the **Actual** field. Click the **Off** button to turn off the high voltage. The HV will not turn on if the detector is sending a remote shutdown or overload signal. The **Overload** indicator means there is a bad connection in your system. The **Shutdown** indicator means that either the detector is warm or you have chosen the wrong **Shutdown** or **Source** mode.

To use a **Sodium Iodide Detector**, mark the checkbox. This changes the gain and zero stabilizers to operate in a faster mode. For the DIM-296, the HV is controlled by the adjustment in the Model 296 and not here.

2.3.7. About

This tab (Fig. 21) displays hardware and firmware information about the currently selected DSPEC jr 2.0, as well as the data **Acquisition Start Time** and **Sample** description. In addition, the **Access** field shows if the MCB is currently locked with a password (see the password discussion in the MAESTRO user manual). **Read/Write** indicates that the MCB is unlocked; **Read Only** means it is locked.

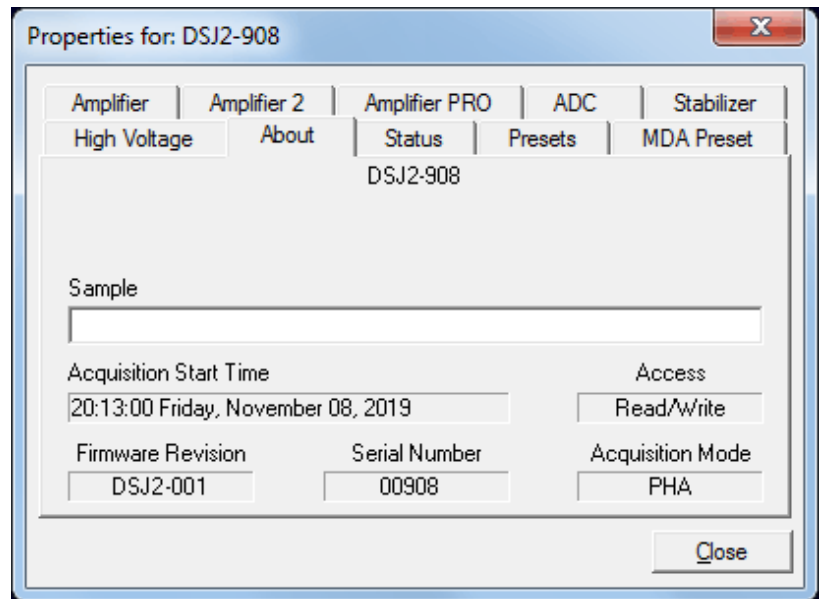


Figure 21. DSPEC jr 2.0 About Tab.

2.3.8. Status

Figure 22 shows the Status tab. There are 21 values monitored at all times. You can select any six of these to be displayed simultaneously on the Status tab. You would normally pick the six that are most important to you. The values you select can be changed at any time, so you can view any of them as needed. Two types of values are presented: **OK** or **ERR**, and numeric value. The state-of-health (SOH) parameters read **OK** or **ERR**. If the state is **OK**, the parameter stayed within the set limits during the spectrum acquisition. If the parameter varied from the nominal value by more than the allowed limit, the **ERR** is set until cleared by the program. The numeric values are displayed in the units reported by the DSPEC jr 2.0. **Security**, **Detector temperature**, and **Live detector temperature** are available only for SMART-1 detectors. For non-SMART-1 detectors, they show **N/A**.

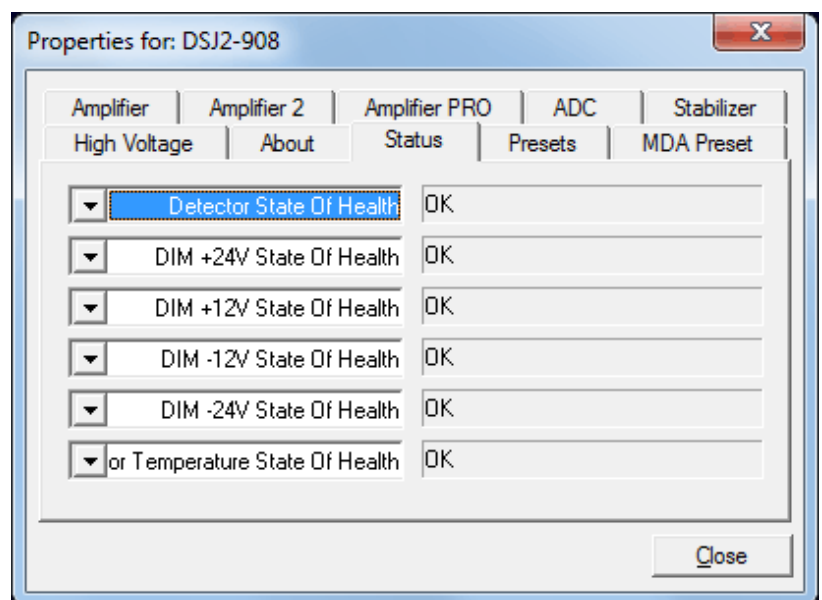


Figure 22. DSPEC jr 2.0 Status Tab.

The parameters displayed are:

Detector State of Health

This is OK if all the SOH are OK and ERR if any one is ERR.

DIM +24V State of Health

This is OK if the +24 volt supply in the DIM has stayed within 200 mV of +24 volts since the last time the SOH was cleared.

DIM +12V State of Health

This is OK if the +12 volt supply in the DIM has stayed within 200 mV of +12 volts since the last time the SOH was cleared.

DIM -12V State of Health

This is OK if the -12 volt supply in the DIM has stayed within 200 mV of -12 volts since the last time the SOH was cleared.

DIM -24V State of Health

This is OK if the -24 volt supply in the DIM has stayed within 200 mV of -24 volts since the last time the SOH was cleared.

Temperature State of Health

This is OK if the detector temperature has stayed below the high temperature limit set in the detector since the last time the SOH was cleared. This is available only for SMART-1 detectors.

High Voltage State of Health

This is OK if the HV supply in the DIM has stayed within 200 V of specified bias voltage since the last time the SOH was cleared.

Shutdown State of Health

This is OK if the detector shutdown has not activated since the last time the SOH was cleared.

Preamplifier overload State of Health

This is OK if the preamplifier overload has not activated since the last time the SOH was cleared.

Security State of Health

This is OK if the security test was passed at the end of the last spectrum acquisition. This is available only for SMART-1 detectors.

Power State of Health

This is OK if the power to the DIM was constant during the last spectrum acquisition.

+24 volts

This is the current value of the +24 volt supply in the DIM as delivered to the detector.

+12 volts

This is the current value of the +12 volt supply in the DIM as delivered to the detector.

-12 volts

This is the current value of the -12 volt supply in the DIM as delivered to the detector.

-24 volts

This is the current value of the -24 volt supply in the DIM as delivered to the detector.

High Voltage

This is the current value of the high voltage bias supply in the DIM as delivered to the detector.

Detector temperature

This is the detector temperature at the time the current spectrum acquisition stopped. This is available only for SMART-1 detectors.

Live detector temperature

This is the detector temperature at the current time. This is available only for SMART-1 detectors.

Battery voltage

This is not used in the DSPEC jr 2.0.

Battery % full

This is not used in the DSPEC jr 2.0.

Battery time remaining

This is not used in the DSPEC jr 2.0.

2.3.9. Presets

Figure 23 shows the Presets tab. MDA presets are shown on a separate tab.

The presets can only be set on an MCB that is not acquiring data (during acquisition the preset field backgrounds are gray indicating that they are inactive). You can use any or all of the presets at one time. To disable a preset, enter a value of zero. If you disable all of the presets, data acquisition will continue until manually stopped.

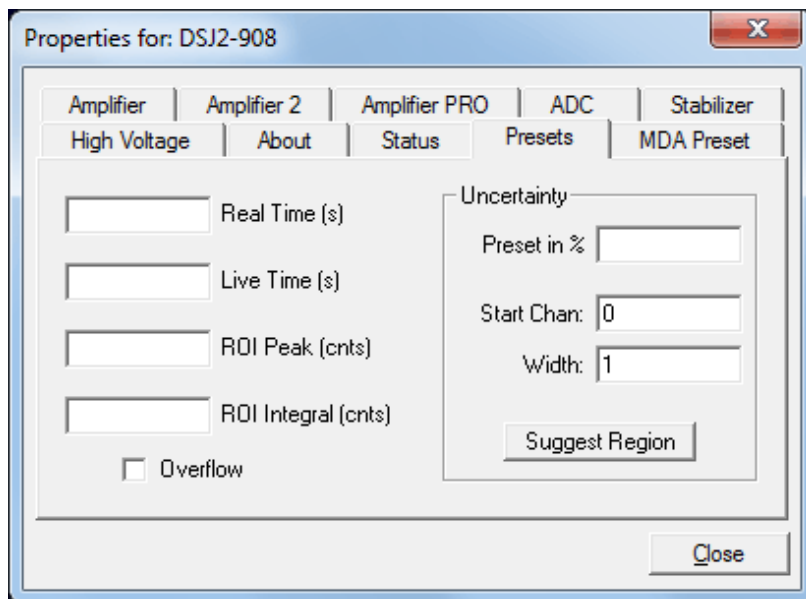


Figure 23. DSPEC jr 2.0 Presets Tab.

The values of all presets for the currently selected MCB are shown on the Status Sidebar. These values do not change as new values are entered on the Presets tab; the changes take place only when you start the next acquisition or **Close** the Properties dialog.

When more than one preset is enabled (set to a non-zero value), the first condition met during the acquisition causes the MCB to stop. This can be useful when you are analyzing samples of widely varying activity and do not know the general activity before counting. For example, the **Live Time** preset can be set so that sufficient counts can be obtained for proper calculation of the activity in the sample with the least activity. But if the sample contains a large amount of this or another nuclide, the dead time could be high, resulting in a long counting time for the sample. If you set the **ROI Peak** preset in addition to the **Live Time** preset, the low-level samples will be counted to the desired fixed live time while the very active samples will be counted for the ROI peak count. In this circumstance, the **ROI Peak** preset can be viewed as a “safety valve.”

Enter the **Real Time** and **Live Time** presets in units of seconds and fractions of a second. These values are stored internally with a resolution of 20 milliseconds (ms) since the MCB clock increments by 20 ms. *Real time* means elapsed time or clock time. *Live time* refers to the amount of time that the MCB is available to accept another pulse (i.e., is not busy), and is equal to the real time minus the *dead time* (the time the MCB is not available).

Enter the **ROI Peak** count preset value in counts. With this preset condition, the MCB stops counting when any ROI channel reaches this value unless there are no ROIs marked in the MCB, in which case that MCB continues counting until the count is manually stopped.

Enter the **ROI Integral** preset value in counts. With this preset condition, the MCB stops counting when the sum of all counts in all channels for this MCB marked with an ROI reaches this value. This has no function if no ROIs are marked in the MCB.

The **Uncertainty** preset stops acquisition when the statistical or counting uncertainty of a user-selected net peak reaches the value you have entered. Enter the **Preset in %** value as percent uncertainty at 1 sigma of the net peak area. The range is from 99% to 0.1% in 0.1% steps. You have complete control over the selected peak region. The region must be at least 7 channels wide with 3 channels of background on each side of the peak. Note that MAESTRO calculates this preset once per 40 seconds. Therefore, the software will continue data acquisition up to 40 seconds after the preset has been reached, and the uncertainty achieved for a high count-rate sample may be lower than the preset value.

Use the **Start Channel** and **Width** fields to enter the channel limits directly, or click **Suggest Region**. If the marker is positioned in an ROI around the peak of interest, **Suggest Region** reads the limits of the ROI with the marker and display those limits in the **Start Chan** and **Width** fields. The ROI can be cleared after the preset is entered without affecting the uncertainty calculation. If the marker is not positioned in an ROI, the start channel is 1.5 times the FWHM below the marker channel and the width is 3 times the FWHM.

The net peak area and statistical uncertainty are calculated in the same manner as for the **MAESTRO Peak Info** command.

Marking the **Overflow** checkbox terminates acquisition when data in any channel exceeds $2^{31} - 1$ ($>2 \times 10^9$) counts.

2.3.10. MDA Preset

The MDA preset (Fig. 24) can monitor up to 20 nuclides at one time, and stops data collection when the values of the minimum detectable activity (MDA) for *all* of the user-specified MDA nuclides reach the needed value. Presets are expressed in Bq, and are evaluated every 40 seconds. The detector must be calibrated for energy in all spectroscopy applications, and for efficiency in all applications but MAESTRO.

The MDA presets are implemented in the MCB (i.e., the entries you make on this screen are saved in the MCB memory), and have no direct link to MDA methods selected in the analysis options for applications such as GammaVision, ScintiVision™, ISOTOPIC, etc. The MDA preset calculation uses the following formula:

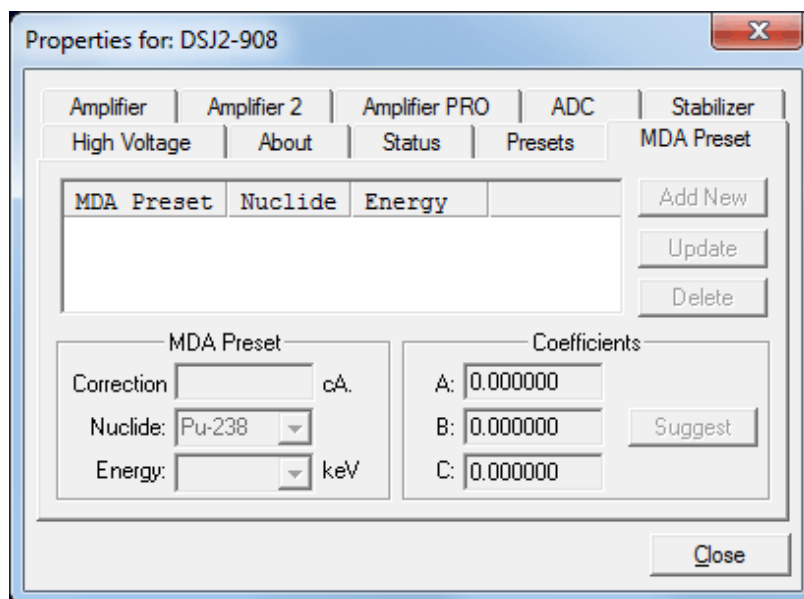


Figure 24. DSPEC jr 2.0 MDA Preset Tab.

$$MDA = \frac{a + \sqrt{b + c * Counts}}{Live\ time * (CorrectionFactor)}$$

where:

a , b , and c are determined by the MDA criteria you choose.

Counts is the gross counts in an ROI that is $2.5 \times FWHM$ around the target peak energy.

Live time is evaluated in 40 second intervals for the MDA presets.

CorrectionFactor is the product of the calibration efficiency at the specified peak energy and the peak's branching ratio (yield) as listed in the working (active) library.

NOTE MAESTRO does not support efficiency calibration. The efficiency component in the *CorrectionFactor* is set to 1.0; the preset field is labeled **Correction** instead of **MDA**; and the preset is based on counting activity (**cA**) instead of becquerels. You can enter the MDA preset either in counts; or corrected for factors such as sample volume, attenuation, or calculated efficiency. For example, if you manually calculate the efficiency for a peak, you can enter a corrected MDA target value by multiplying the desired MDA value times the calculated efficiency, and entering the product as the **Correction**.

To add an MDA preset, enter the preset value in the **MDA** or **Correction** field; select the **Nuclide** and **Energy**; enter the desired values for coefficients a , b , and c ; then click **Add New**.

To edit an existing preset, click to highlight it in the table. This will load its **Nuclide**, **Energy**, and coefficients in the lower sections of the dialog. Change as needed, then click **Update**.

To remove a preset, click to highlight it in the table, then click **Delete**.

IMPORTANT These MDA presets *are not dynamically calculated*. Each time you add an MDA preset to this table, its *CorrectionFactor* value is calculated and stored in the MCB's memory. If you then load a different library, change the efficiency calibration, or change the system geometry, the spectroscopy application *will not update* the existing *CorrectionFactors*, and your MDA presets may no longer be applicable.

When using spectrum analysis applications such as GammaVision and Scinti-Vision, you can create an analysis options file (.SDF or .SVD file) for each system geometry that you use; and include in it a set of MDA presets specific to that geometry, efficiency calibration, and nuclide library. You can then recall this tailored analysis options file as needed.

2.4. Setting the Rise Time in Digital MCBs

To achieve the best results when using a digital spectrometer, such as the DSPEC jr 2.0, we recommend that you set the rise time of the pulses being processed by the digital filter to the minimum value for the resolution needed.

The pulse rise time (and also fall time) is based on the time required for each pulse to reach its peak value. This “peaking time” is about twice that indicated by the conventional time constants displayed on the front panel of commercial analog amplifiers. For example, germanium detectors are often specified at a 6- μ s time constant; this setting is equivalent to 12- μ s peaking (rise) time in our digital spectrometers.

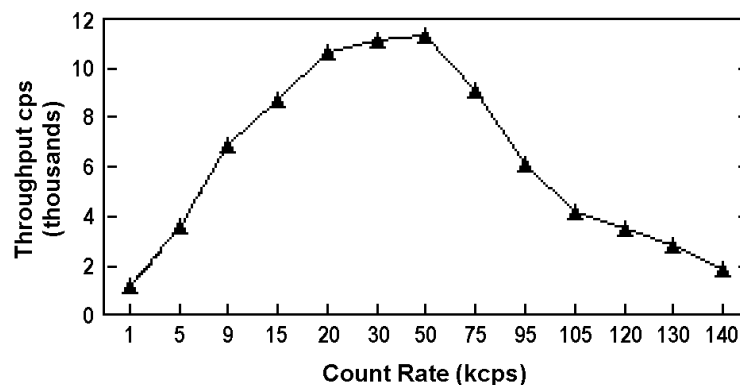


Figure 25. An Example of the Tradeoff Between Throughput and Count Rate.

Up to some value of rise time, one can expect improved resolution with increasing rise time; there will, however, be a tradeoff in maximum throughput to memory. Figure 25 illustrates an

example of this tradeoff. ORTEC digital spectrometers operate well above the peak of the throughput curve. Operating there allows these instruments to handle an even higher rate of incoming counts, but with less data into memory and, therefore, a longer count time to the same detection limit. It is possible to move the peak of the curve to the right (more counts to memory with higher input count rate) by reducing the pulse rise (and fall) time, thereby trading off resolution for maximum count rate.

Table 2 is a guide to choosing a count rate that will ensure that the most efficient operation of your digital spectrometer over the range of anticipated input count rates for your application — that is, at or below the throughput peak — while achieving the best resolution obtainable from the detector consistent with that requirement. Enter the rise time that best matches your dynamic range of count rate (note that the available rise-time settings will vary by instrument; this chart is a general guide only).

Table 2. Rise Time Selection Guide.

Input Count Rate Dynamic Range	Maximum Throughput	Rise Time (μs)
0--->20000	9000	12
0--->50000	12500	8
0--->75000	23500	4
0--->100000	37000	2.4
0--->150000	50000	1.6
0--->200k	70000	0.8
0--->220k	85000	0.6
0--->250k	100000	0.4
0--->300k	120000	0.2

The longest rise time shown in the table is 12 μs, even though some digital instruments can be set for rise times as long as 23 μs. If throughput is not an issue because all samples are low rate, increasing the rise time beyond 12 μs might achieve a small improvement in resolution. For planar detectors, such as ORTEC's GLP, Si(Li), IGLET, and IGLET-X Series, operating at longer rise times frequently gives improved resolution.

2.5. Troubleshooting

2.5.1. MAESTRO Does Not Connect with the DSPEC jr 2.0

If properly installed and functioning MAESTRO software (or other CONNECTIONS programs) cannot find and communicate with the DSPEC jr 2.0, check for the following:

- The MCB is not turned on.
- The USB cable is not properly connected.
- Check the Master Instrument List on the computer to ensure that the DSPEC jr 2.0 is on the list. If it is not listed, shutdown and restart the computer, then re-run the MCB Configuration program according to Section 2.2.4.

- See the CONNECTIONS Driver Update Kit instructions for more detailed information on using MCB Configuration.

3. SPECIFICATIONS

3.1. DSPEC jr 2.0

Display 240 × 160 pixel, backlit LCD provides status information, instrument ID, bias information, live and real time.

Concurrent Connections Limited by the computer and supporting USB hubs. ORTEC CONNECTIONS software supports up to 127 USB-connected devices per computer.

Maximum System Throughput >100,000 cps; depends on shaping parameters.

System Gain Settings

- **Coarse Gain Settings** 1 to 32 in binary steps (1, 2, 4, 8, 16, 32).
- **Fine Gain** 0.45 to 1.

The available range of gain settings supports all types of HPGe detectors. Specifically the following maximum energy values are achievable using the standard ORTEC preamplifier (maximum to minimum gain):¹³

- **COAX** 187 keV–12 MeV
- **GLP/SLP** 16.5 keV–1 MeV

Amplifier Input Polarity Selectable via software.

System Conversion Gain Computer selectable as 16384, 8192, 4096, 2048, 1024, or 512 channels.

Preamplifier Computer selectable as either resistive or TRP preamplifier.

ADC Gate (Not available for -PLUS [transistor-reset preamplifier] or SMART-1 detectors.) Accepts a positive TTL input via the DIM's "Inhibit" BNC. Signal must occur prior to and extend 0.5 μs beyond peak detect. Software-selectable as off, coincidence, or anticoincidence.

Digital Filter Shaping-Time Constants

- **Rise time** 0.8 μs to 23 μs in steps of 0.2 μs.
- **Flattop** 0.3 to 2.4 in steps of 0.1 μs.

¹³For the legacy LO-AX and IGLET-X detector types, the respective energy ranges are 94 keV–6 MeV and 8 keV–500 keV.

Dead-Time Correction Extended live-time correction according to Gedcke-Hale method. Accuracy: area of reference peak changes $<\pm 3\%$ from 0 to 50,000 cps.

Low-Frequency Rejector (LFR) When ON, removes low-frequency (<3 kHz) input noise from spectrum.

Linearity

- **Integral Nonlinearity** $<\pm 0.025\%$ over top 99.5% of spectrum, measured with a mixed source (^{55}Fe at 5.9 keV to ^{88}Y at 1836 keV).
- **Differential Nonlinearity** $<\pm 1\%$ (measured with a BNC pulser and ramp generator).

System Temperature Coefficient

- **Gain** <50 ppm/ $^{\circ}\text{C}$ (typically <30 ppm/ $^{\circ}\text{C}$).
- **Offset** <3 ppm/ $^{\circ}\text{C}$, with rise and fall times of 12 μs and flattop of 1 μs (similar to analog 6- μs shaping).

Pulse Pileup Rejector Automatically set threshold. Pulse-pair resolution typically 500 ns.

Automatic Digital Pole-Zero Adjustment³ Can be set automatically or manually. Remote diagnostics via Insight Virtual Oscilloscope mode in MAESTRO.

Digital Gated Baseline Restorer Software-controlled adjustment of the restorer rate (Fast, Slow, and Auto⁴).

LLD Digital lower-level discriminator set in channels. Hard cutoff of data in channels below the LLD setting.

ULD Digital upper-level discriminator set in channels. Hard cutoff of data in channels above the ULD setting.

Ratemeter Monitor the input count rate on the DSPEC jr 2.0 display or computer screen.

Battery Internal battery-backed up memory to maintain settings in the event of a power interruption.

Presets Multiple presets can be set on any or all of the following:

- **Real Time** Stops data collection when the real time reaches this value.
- **Live Time** Stops data collection when the live time reaches this value.

- **ROI Integral** Integral count stops data collection when the sum of counts in all ROI channels reaches this value.
- **ROI Peak** Peak count stops data acquisition when the count in any ROI channel reaches this value (maximum value of $2^{31} - 1$ counts [2×10^9]).
- **Uncertainty** Sets the required statistical accuracy on a key peak (for example: stop counting when the activity of ^{60}Co is known to be better than 5%).
- **Multi-Nuclide MDA** Stops data collection when the value of the minimum detectable activity (MDA) for up to 20 user-specified MDA nuclides reaches the needed value. The presets are implemented in hardware so the computer does not have to poll the DSPEC jr 2.0 for the preset to operate. See Section 2.3.10 for details on the MDA preset calculation.
- **Data Overflow** Terminates acquisition when data in any channel exceeds $2^{31} - 1$ (2×10^9) counts.

Digital Spectrum Stabilizer

- **Stabilization** Peak centroid (zero and gain) channel 2 to 16384; stabilization window width (zero and gain) ± 1 to ± 256 channels.
- **Zero Correction Resolution** ± 64 channels with a minimum adjustment of 0.1 channel out of 16384 total channels.
- **Gain Correction Resolution** 0.00025% (from 99.5% to 100.5% in 4096 steps).

3.1.1. Electrical and Mechanical

Dimensions

- **DSPEC jr 2.0** 8.1 cm H \times 20.3 cm W \times 24.9 cm D (3.2 in. \times 8 in. \times 9.8 in.).
- **DIM** 11.2 cm H \times 3.13 cm W \times 6.5 cm D (4.4 in. \times 1.25 in. \times 2.6 in.).

Weight

- **DSPEC jr 2.0** 1.0 kg (2.2 lb).
- **DIM:** <240 gm (0.5 lb).

Operating Temperature Range 0 to +50°C, including LCD display.

3.1.2. Connectors

DETECTOR Multi-pin connector (13W3) carries the following:

- Preamp Power 1 W only (+12V, -12V, +24V, -24V, 2 GND).
- Amp In Normal amplifier input.
- Inhibit For TRP or gate.
- Battery Power (5–12 V) for DIM.
- Control for HV.
- SMART-1 HPGe detector control.

USB High-speed USB communications.

12-15V DC External power input from wall-mounted dc power supply, +12 V dc, <1.25 A, center contact positive. The connector is RAPC712 (Switchcraft), 5.5 mm × 2.5 mm.

3.2. HPGe High-Voltage Detector Interface Modules

The DSPEC jr 2.0 offers high-voltage supply flexibility in the form of modules that connect the detector to the MCA and provide bias and SMART-1 support (if appropriate). These modules have an input connector that connects to the DETECTOR connector (discussed in Section 3.1.2). On a SMART-1 detector, the high voltage module will be hardwired to the detector. To support older detectors, a detector interface module (DIM) with 12-inch leads connect the detector and DSPEC jr 2.0, providing HV bias and control. The leads are as follows:

- 9-pin D preamplifier power cable
- Analog In
- Shutdown In
- Bias Out
- Inhibit In

The DSPEC jr 2.0 uses the following DIMs:

- DIM-POSGE For any non-SMART-1, positive-bias, HPGe detector (includes leads with mating connectors for existing detector cabling), +500 V to +5000 V.
- DIM-NEGGE For any non-SMART-1, negative-bias HPGe detector (includes leads with mating connectors for existing detector cabling), -500 V to -5000 V.

- DIM-POSNAI For any positive-bias NaI detector (includes leads with mating connectors for existing detector cabling), +100 V to +1800V, 300 μ A.
- DIM-296 For any positive-bias NaI detector (includes Model 296 ScintiPack tube base/preamplifier/bias supply for NaI detectors with 14-pin, 10 stage photo multiplier tubes), 0 V to +1200 kV.

In all cases except the DIM-296, the bias voltage setting and shutdown polarity are set via MAESTRO or other CONNECTIONS software.

The SMART-1 detector provides detector state-of-health information as discussed above and in Section 1.5.

3.3. Feature Mask Bits

The following table describes the feature bits from the SHOW_FEATURES command discussed on page 72. If the feature is supported in the DSPEC jr 2.0 the bit is set to 1; if the feature is not supported, the bit is 0.

Bit	Meaning
0	Software-selectable conversion gain
1	Software-selectable coarse gain
2	Software-selectable fine gain
3	Gain stabilizer
4	Zero stabilizer
5	PHA mode functions available
6	MCS mode functions available
7	List mode functions available
8	Sample mode functions available
9	Digital Offset (e.g., 920)
10	Software-selectable analog offset
11	HV power supply
12	Enhanced HV (SET_HV, SET/SHOW_HV_POL, SHOW_HV_ACT)
13	Software-selectable HV range (ENA_NAI, DIS_NAI)
14	Auto PZ (START_PZ_AUTO)
15	Software-selectable manual PZ (SET/SHOW_PZ)
16	Battery-backed, real-time clock (SHOW_DATE/TIME, SHOW_DATE/TIME_START)
17	Sample changer support (SET/SHOW_OUTPUT, SHOW_INPUT)
18	One-button acquisition (ENA/DIS/SHOW_TRIG_SPEC, MOVE)

Bit	Meaning
19	Nomadic (likely to move between opens)
20	Local app data (SET_DATA_APP, SHOW_DATA_APP)
21	Software-retrievable serial number
22	Power management commands
23	Battery status support (SHOW_STAT_BATT)
24	Software-selectable AMP polarity (SET/SHOW_GAIN_POLAR)
25	Support for flattop optimization (ENA/DIS_OPTI)
26	Stoppable AutoPZ (STOP_PZ_AUTO)
27	Network support (e.g., DSPEC)
28	Multi-drop serial support (e.g., MicroNOMAD®)
29	Software-selectable DPM address (SET_DPM_ADDR)
30	Multiple devices (e.g., 919)
31	Software-selectable ADC gate mode (SET_GATE...)
32	Software-downloadable firmware
33	Time histogramming functions available (e.g., 9308)
34	Software-selectable lower level discriminator
35	Software-selectable upper level discriminator
36	MCS-mode SCA input available
37	MCS-mode positive TTL input available
38	MCS-mode fast-negative NIM input available
39	MCS-mode discriminator input available
40	Software-switchable MCS-mode discriminator edge
41	Software-programmable MCS-mode discriminator level
42	Software-programmable SCA upper and lower thresholds
43	Software-selectable MCS-mode input sources
44	Uncertainty/statistical preset (SET_UNCERT_PRES)
45	Features vary by input (SHOW_FEATURES depends on device/segment; multi-input MCBs only)
46	Software-selectable HV shutdown mode (SET/SHOW/VERI_SHUT)
47	Software-selectable shaping time constants (SET_SHAP)
48	Explorable shaping time constants (SHOW_CONFIG_SHAP)
49	Advanced shaping time (SET_SHAP_RISE, SET_SHAPE_FLAT, etc.)
50	Software-selectable BLR (ENA/DIS/SHO_BLR_AUTO SET/SHO/VERI_BLR)
51	SHOW_STATUS command supported (returns \$M record)
52	Overflow preset (ENA/DIS/SHO_OVER_PRES)
53	Software-enabled, MicroNOMAD-style audio clicker (ENA/DIS_CLICK)
54	Software-readable thermistor (SHOW_THERM)

Bit	Meaning
55	Floating-point fine gain (SET/SHO/VERI/LIST_GAIN_FINE)
56	Software-enabled pileup rejector. (ENA/DIS/SHO_PUR, SET/VERI_WIDT_REJ)
57	Alpha-style HV power (SHOW_HV_CURRENT)
58	Software-readable vacuum (SHOW_VACUUM)
59	Acquisition alarms (ENA/DIS/SHO_ALARM)
60	Hardware acquisition trigger (ENA/DIS/SHO_TRIG)
61	Ordinal numbers for shaping times (SET_SHAP 0, SET_SHAP 1, ...)
62	Query gain ranges (LIST/VERI_GAIN_FINE, ..._COAR, ..._CONV)
63	Routable inputs (SET/SHOW_INPUT_ROUTE)
64	External dwell support (ENA/DIS_DWELL_EXT)
65	Selectable SUM or REPLACE MCS modes (ENA/DIS_SUM)
66	External start of pass support (ENA/DIS/SHO_START_EXT)
67	Explorable with MCS list commands (LIST_SOURCE, LIST_LLSCA, LIST_ULSCA)
68	Device supports the MDA preset
69	Software-selectable ADC type (Matchmaker™)
70	Has ability to daisy-chain MCBs (DART)
71	ZDT functions available (DSPEC Plus)
72	DSPEC Plus-style Insight triggering (LIST/SET_TRIG_SAMP)
73	Multiple inputs per connection (for example, OCTÊTE® Plus)
74	Hardware count-rate meter (SH_CRM)
75	Has multiple ZDT modes (SET/SHOW/LIST_MODE_ZDT)
76	Has multi-nuclide MDA preset
77	Has MCS Replace then Sum Mode (SET_RPLSUM)
78	Has programmable external dwell voltage capability
79	No Peak Preset feature (M ³ CA and OASIS)
80	Programmable pulser (OASIS)
81	Programmable Vacuum/HV interlock (OASIS)
82	Programmable Current/HV interlock (OASIS) 0
83	Explorable Stabilizer (LIST_GAIN_ADJU, LIST_ZERO_ADJU)
84	Has programmable input impedance (MCS)
85	Advanced shaping-time feature has no CUSP (digiDART, DSPEC jr 2.0, DSPEC Pro)
86	Selectable HV rise-time (SET/SHOW/LIST_HV_RISE) (SBS-60)
87	—
88	Monitor command support (SHOW_MONI_MAX/LABEL/VALUE)
89	SMART-1 Detector support (SHOW_SMART_DET, SHOW_SNUM_DET, SHOW_HV_RECO)
90	Nuclide report (SET/SHOW_NUCL_COEF, SET/SHOW_ROI_NUCL, ...)

Bit	Meaning
91	Interactive Display Features Such as Nuclide Report
92	Advanced Stored Spectra (SH_SPEC_COUNT, SET/SHOW_SPEC_ID, MOVE)
93	SET/SHOW_VIEW in MCBs with Dual-Port Memory or printer port interfaces, LIST_VIEW in all MCBs
94	Connected to MCB via RS-232 (slow) port
95	No SET_HV_POSI, SET_HV_NEGA, ENA_NAI and DIS_NAI
96	Low Frequency Rejector (ENA/DIS/SHOW_LFR)
97	Resolution Enhancer (ENA/DIS/SH_RENHANCER, SET/SHOW_RETABLE idx,val)
98	SET_MODE_RELIST for Resolution Enhancer List Mode
99	Readable Sample mode time per channel (SH_TIME_SAMPLE)
100	Adjustable Sample mode time per channel (SET/LIST_TIME_SAMPLE)
101	List Mode data streamed and formatted as in digiBASE
102	Supports ETP mode (ENA/DIS/SHOW_ETP)
103	List Mode data streamed and formatted as in DSPEC PRO
104	SET/SHOW/LIST_PZ using floating point microseconds
105	—
106	—
107	—

4. FIRMWARE COMMANDS AND RESPONSES

Most software communication with the DSPEC jr 2.0 takes place through the CONNECTIONS software layer. CONNECTIONS is used by all ORTEC software and can be accessed for other software development with our CONNECTIONS Programmer's Toolkit with Microsoft ActiveX® Controls (A11). Use the DLL interface call [MIOComm](#) or the ActiveX control UCONN's [Comm](#) method to send commands to instruments and receive responses.

4.1. Command Format

The commands consist of a command header that may be followed by numeric parameter values. The header consists of a verb; a verb and noun; or a verb, noun, and modifier; each separated by underscores. The first four letters of a word in a command will always be enough to uniquely identify that word when composing commands for the instrument. For example, the command **ENABLE_GAIN_STABILIZATION** can be abbreviated to **ENAB_GAIN_STAB**.

Numeric parameters are unsigned integer numbers that follow the command header separated by one or more spaces. Specific commands require multiple parameters, separated by commas, that specify numeric quantities related to the operation of the MCB, such as live time or conversion gain. The command **SET_WINDOW 0,8192** has two parameters, 0 and 8192, which set the window of interest to start at channel 0 and continue for 8192 channels.

Some parameters are optional and are delimited by square brackets in the command prototype line to distinguish them from mandatory parameters (e.g., **SET_WINDOW [start,length]**). Commands with optional parameters can be sent to the MCB without the optional parameters, in which case the instrument behavior will be explained in the command description.

4.2. Error Codes

On each completion of the command, the MCB returns a macro error code and micro error code. The macro error code represents the general class of error with 0 meaning no error, and the micro error code represents the sub-class of error with 0 meaning no error. In case of error condition, you can use the [MIOGetLastError](#) (DLL interface) or [GetErrMajor](#), [GetErrMinor](#) (ActiveX control interface).

Macro error codes:

0	Success
1	Power-up just occurred
2	Battery-backed data lost
129	Command syntax error

131	Command execution error
132	Invalid Command

For macro code 129 (syntax error) or 131 (execution error), the following apply:

1	Invalid Verb
2	Invalid Noun
4	Invalid Modifier
128	Invalid first parameter
129	Invalid second parameter
130	Invalid third parameter
131	Invalid fourth parameter
132	Invalid number of parameters
133	Invalid command
134	Response buffer too small
135	Not applicable while active
136	Invalid command in this mode
137	Hardware error
138	Requested data not found

Micro error codes:

0	Success
1	Input already started/stopped
2	Preset already exceeded
4	Input not started/stopped
64	Parameter was rounded (for decimal numbers)
128	No sample data available

4.2.1. Dollar Response Records

SHOW and STEP commands respond with a single dollar response record followed immediately by a percent response record. All valid dollar response records for each command are listed in the command dictionary.

The following list provides the general form of each dollar response record for the MCB API. In this list, lower case letters represent numeric values. The letters “ccc” always represent an 8-bit

unsigned checksum of all characters on the record up to but not including the checksum characters, and <CR> represents the ASCII carriage return character.

\$Axxxxccc<CR>	xxx is a single 8-bit unsigned number.
\$Cxxxxxccc<CR>	xxxxx is a single 16-bit unsigned number.
\$Dxxxxxyyyyccc<CR>	xxxxx and yyyyy are 16-bit unsigned numbers.
\$Exxxxxccc<CR>	xxxxx is a single 16-bit alarm mask.
\$Fssss...<CR>	ssss... is a variable length ASCII character sequence (no checksum is sent with this record).
\$Gxxxxxxxxxxxccc<CR>	xxxxxxxxxxx is a single 32-bit unsigned number.
\$IT<CR>	True response to a SHOW command (no checksum).
\$IF<CR>	False response to a SHOW command (no checksum).
\$Jxxxxxyyyyy...ccc<CR>	Response to SHOW_CONFIGURATION command.
\$Mxxxxxxxxxxx...ccc<CR>	Response to SHOW_STATUS command.
\$Nxxxyyyzzzccc<CR>	xxx, yyy, and zzz are 8-bit unsigned numbers.

4.2.2. MCB Commands

This section lists each command with a description of its operation. The descriptions include a list of any error codes that may result. As described in the two preceding sections, the usual response is a macro error code of 0 and a micro error code of 0 (no errors). Though syntax and communication error responses may result from any command, in practice, these error responses rarely occur on systems with reliable communication hardware running debugged software.

The commands are listed in alphabetical order, each starting with a command prototype line. Uppercase letters, numeric digits, blank space, and special symbols such as the underscore “_” and comma “,” in the prototype line are *literal text to be sent to the MCB exactly as they appear*. Lowercase letters in the prototype line represent numeric values as described in the accompanying text; they should not be sent literally to the MCB but should be replaced by an appropriate numeric value. In this section the term <CR> represents the ASCII carriage return character, decimal value 13; and the character “_” represents the ASCII underscore character, decimal value 95.

CLEAR

The channels of spectral data in the window of interest (see SET_WINDOW command) are set to zero. The live time and true time counters are also set to zero. This command is equivalent to the combination of CLEAR_COUNTERS and CLEAR_DATA commands.

CLEAR_ALL

This command is equivalent to the combination of CLEAR_COUNTERS, CLEAR_DATA, CLEAR_PRESETS, and CLEAR_ROI commands.

CLEAR_COUNTER

The live time and true time counters are set to zero.

CLEAR_DATA

The channels of spectral data in the window of interest (see SET_WINDOW command) are set to zero. The ROI flags are not changed, nor are the presets changed.

CLEAR_HV_HEALTH

Clears (resets) the state-of-health bits. This command clears the SOH bits in the DIM and does *not* affect the stored SOH (which is reported when the instrument is not acquiring data).

CLEAR_MDA_PRESET

Clears all MDA preset values. This command is used to quickly clear the list of MDA preset values.

CLEAR_PRESETS

The live time, true time, ROI integral, ROI peak, and overflow presets are all set to zero (disabled).

CLEAR_ROI

The region-of-interest flags for the channels in the window of interest (see SET_WINDOW command) in the currently selected device (see SET_DEVICE command) are cleared.

CLOSE_FILE_FLASH crc

No function in the DSPEC jr 2.0; included for backward compatibility.

COMP

No function in the DSPEC jr 2.0; included for backward compatibility.

DISABLE_BLRE_AUTOMATIC

Disables the automatic determination of baseline restorer time constant. See also ENABLE_BLRE_AUTOMATIC, SET_BLRE, and SHOW_BLRE.

DISABLE_GAIN_STABILIZATION

Stops stabilization of the gain peak while data is being acquired. The gain stabilization adjustment is held at its current value until either gain stabilization is reenabled with the ENABLE_GAIN_STABILIZATION command or reinitialized with the INITIALIZE_

GAIN_STABILIZATION, SET_GAIN_PEAK or SET_GAIN_WIDTH command. See also SHOW_GAIN_STABILIZATION.

DISABLE_GATE_ROUTE

No function in the DSPEC jr 2.0. This command has been included for backward compatibility.

DISABLE_HV

Turns off the high-voltage enable signal of the DSPEC jr 2.0. See the section on the bias supply for more information about the high-voltage output. See also ENABLE_HV and SHOW_HV.

DISABLE_HV_DIM

Disables the use of the Detector connector on the back of the DSPEC jr 2.0 and causes the DSPEC jr 2.0 to suppress State of Health information (see SHOW_HV_HEALTH command). Also, the command disables polling of a standard DIM module (e.g. DIM-POSNAI, DIM-POSGE, DIM-NEGGE, or DIM-296) by the DSPEC jr 2.0.

DISABLE_LFR

Returns the DSPEC jr 2.0 to normal operation if the LFR filter is enabled. See also ENABLE_LFR and SHOW_LFR.

DISABLE_NAI

Switches the stabilizers to Ge mode. See ENABLE_NAI.

DISABLE_OPTI_NEED

Disables the reporting of an error when the DSPEC jr 2.0 has not been optimized.

DISABLE_OVERFLOW_PRESET

Disables the overflow preset. Channels that receive a count when they contain 2147483647 counts, the maximum number of counts, will roll over to zero counts if the overflow preset is disabled. See also ENABLE_OVERFLOW_PRESET and SHOW_OVERFLOW_PRESET.

DISABLE_PZ_AUTOMATIC

Disables the automatic pole zero mode. See also ENABLE_PZ_AUTOMATIC.

DISABLE_PZ_NEED

Disables the reporting of an error when the DSPEC jr 2.0 has not been pole zeroed.

DISABLE_REMOTE

No function in the DSPEC jr 2.0; included for backward compatibility.

DISABLE_THRESHOLD_AUTOMATIC**DISABLE_THRESHOLD_SAMPLE****DISABLE_TRIGGER_SPECIAL**

No function in the DSPEC jr 2.0; included for backward compatibility.

DISABLE_TRIGGER

Disables the data acquisition trigger that was enabled by the ENABLE_TRIGGER command. Cancels an ENABLE_TRIGGER_REP if it is issued before the acquisition starts. See ENABLE_TRIGGER, TRIGGER, and SHOW_TRIGGER.

DISABLE_ZERO_STABILIZATION

Stops stabilization of the zero peak while data is being acquired. The zero stabilization adjustment is held at its current value until either zero stabilization is reenabled with the ENABLE_ZERO_STABILIZATION command or reinitialized with the INITIALIZE_ZERO_STABILIZATION, SET_ZERO_CHANNEL or SET_ZERO_WIDTH commands. See also SHOW_ZERO_STABILIZATION.

DISABLE_ZDT

Returns the DSPEC jr 2.0 to normal operation if in zero-dead-time (ZDT) mode. See ENABLE_ZDT.

ENABLE_BLRE_AUTOMATIC

Enables the automatic determination of baseline restorer time constant. See also DISABLE_BLRE_AUTO, SHOW_BLRE, and SET_BLRE.

ENABLE_GAIN_STABILIZATION

Enables the stabilization of the gain peak. See also DISABLE_GAIN_STABILIZATION, SHOW_GAIN_STABILIZATION, and INITIALIZE_GAIN_STABILIZATION.

ENABLE_HV

Turns on the high-voltage enable output of the DSPEC jr 2.0. See also DISABLE_HV and SHOW_HV.

ENABLE_HV_DIM

Enables the DSPEC jr 2.0 to work with a standard DIM (e.g. DIM-POSNAI, DIM-POSGE, or DIM-NEGGE, DIM-296). This command enables the DSPEC jr 2.0 to poll the DIM and causes the DSPEC jr 2.0 to return State of Health information to a controlling program (see SHOW_HV_HEALTH command).

ENABLE_LFR

Sets the DSPEC jr 2.0 to LFR mode. See also DISABLE_LFR and SHOW_LFR.

ENABLE_NAI

Switches the stabilizers to NaI mode. The stabilizers use the “fine” adjustment in NaI mode and the “very fine” adjustment in Ge mode. See `DISABLE_NAI`.

ENABLE_OPTI_NEED

Enables the reporting of an error when the DSPEC jr 2.0 needs optimizing.

ENABLE_OVERFLOW_PRESET

Enables the overflow preset. Channels that receive a count when they contain 2147483647 counts, the maximum number of counts, will stop the acquisition if the overflow preset is enabled. The channel that caused the preset to complete will contain 2147483647 counts. See also `DISABLE_OVERFLOW_PRESET` and `SHOW_OVERFLOW_PRESET` commands.

ENABLE_PZ_AUTOMATIC

Enables the automatic pole zero mode. See also `DISABLE_PZ_AUTO` and `SHOW_PZ_AUTO`.

ENABLE_PZ_NEED

Enables the reporting of an error when the DSPEC jr 2.0 needs pole zeroing.

ENABLE_REMOTE

No function in the DSPEC jr 2.0; included for backward compatibility.

ENABLE_THRESHOLD_AUTOMATIC

Enables automatic determination of the positive and negative thresholds. See also `DISABLE_THRESHOLD_AUTO`, `SHOW_THRESHOLD_AUTO`, `SET_THRESHOLD_NEGATIVE`, and `SET_THRESHOLD_POSITIVE`.

ENABLE_THRESHOLD_SAMPLE**ENABLE_TRIGGER_SPECIAL**

No function in the DSPEC jr 2.0; included for backward compatibility.

ENABLE_TRIGGER

Enables the Sample Ready connector. Acquisition will then start when an external trigger occurs on the Sample Ready connector or when the `TRIGGER` command is issued. See also `TRIGGER`, `DISABLE_TRIGGER`, `SHOW_TRIGGER`, `SET_TRIGGER_POLARITY`, and `SHOW_TRIGGER_POLARITY`.

ENABLE_ZDT

Sets the DSPEC jr 2.0 to ZDT mode. See SET_MODE_ZDT for information on selecting the ZDT mode.

ENABLE_ZERO_STABILIZATION

Enables the stabilization of the zero peak. See also DISABLE_ZERO_STABILIZATION, SHOW_ZERO_STABILIZATION, and INITIALIZE_ZERO_STABILIZATION.

INITIALIZE

Returns the DSPEC jr 2.0 (including flash) to the factory default settings, and simulates a power-down/power-up cycle for the MCB after a simulated loss of battery-backed-up memory. **CAUTION: Before issuing this command, protect the DIM by turning off the detector bias and physically disconnecting the detector cable from the DSPEC jr 2.0 rear panel.**

INITIALIZE_GAIN_STABILIZATION

Resets the gain peak stabilization adjustment to unity (no adjustment). This value is reported as 2048 by the SHOW_GAIN_ADJUSTMENT command. See also SET_GAIN_ADJUSTMENT, ENABLE_GAIN_STABILIZATION, and DISABLE_GAIN_STABILIZATION.

INITIALIZE_ZERO_STABILIZATION

Resets the zero peak stabilization adjustment to unity (no adjustment). This value is reported as 2048 by the SHOW_ZERO_ADJUSTMENT command. See also SET_ZERO_ADJUSTMENT, ENABLE_ZERO_STABILIZATION, and DISABLE_ZERO_STABILIZATION.

LIST_BLRE

Lists the valid settings of the baseline restore function. See also SET_BLRE.

Response:

BLRE 10.0 100.0 10 100

Legal settings are 10.0 to 100.0 in steps of 1.

LIST_CORR_FLAT

Lists the valid settings of the flattop width. See also SET_CORR_FLAT.

Response:

CORR_FLAT -1.0 .992 0 255

Legal settings are from -1 to 0.992 in (255 - 0 + 1 = 256) steps.

LIST_DISPLAY

Not used by the DSPEC jr 2.0; included for backward compatibility.

LIST_GAIN_COARSE

Lists the valid coarse-gain settings.

Response:

GAIN_COAR 1 2 4 8 16 32

LIST_GAIN_CONV

Lists legal conversion gain settings.

Response:

GAIN_CONV 512 1024 2048 4096 8192 16384

LIST_GAIN_FINE

Lists the valid fine-gain settings.

Response:

GAIN_FINE 0.45 1.0 88437 196607 0.45 to 1 in 108171 steps.

LIST_HV

Lists the valid high-voltage settings.

Response:

HV 0 5000 0 5000 0 to 5000 in 5000 steps.

LIST_MODE_ZDT

Reports the legal ZDT-mode settings. Each item in the list can be selected by sending the SET_MODE_ZDT command with a mode number. The mode number is implied by the location of the mode in the list. For example, the first item in the list had a mode number of 0. To select the first item, send SET_MODE_ZDT 0. The second item has a mode number of 1, and so on.

Response:

MODE_ZDT NORM_CORR CORR_ERR Mode 0 stores the normal and corrected spectra. Mode 1 stores the corrected and the error spectra.

LIST_ROI_SAMPLE

Lists the valid ROI sample settings.

Response:

ROI_SAMP PUR BLN BLRG BLD BUSY GATE RESV PKDET

LIST_SHAP_CUSP

Not used by the DSPEC jr 2.0; included for backward compatibility.

LIST_SHAP_FLAT

Lists the valid flattop width settings.

Response:

SHAP_FLAT 0.3 2.4 3 24

Settings are 0.3 to 2.4 in 22 steps of 0.1 μ s.

LIST_SHAP_RISE

Lists the valid rise-time settings.

Response:

SHAP_RISE 0.8 23.0 4 115

Settings are 0.8 to 23 in 112 steps of 0.2 μ s.

LIST_SHUT

Lists the valid shutdown settings.

Response:

SHUTDOWN TTL ORTEC SMART

OFF

Turns the DSPEC jr 2.0 off.

OPEN_FILE "filename.ext"

OPEN_FILE_FLASH

RESET

RESET_REMOTE

No function in the DSPEC jr 2.0; included for backward compatibility.

SET_BLRE baseline

This sets the baseline restorer time constant to the value baseline. Baseline is in microseconds with a range from 10 to 100. The specified value is only used if automatic baseline restorer mode is disabled. See also **ENABLE_BLRE**, **DISABLE_BLRE**, and **SHOW_BLRE**.

SET_CORRECTION_FLAT value

This sets the flattop correction to value. The flattop correction is normally determined with the **OPTIMIZE** command. See also **SHOW_CORRECTION_FLAT**.

SET_DATA [start, chans],value

If the optional start and chans parameters are included in this command, the range of channels specified by start and chans is loaded with value. If start and chans are not specified, sets all channels of spectral data in the window of interest (see **SET_WINDOW** command) to the specified value. ROI flags are not affected.

SET_DATA_APPLICATION "string1","string2"

This is used to store information in the DSPEC jr 2.0 internal memory that can be used by other programs, such as sample descriptions and energy calibrations. CONNECTIONS uses this feature. String1 = the data identifier, 32 bytes maximum; string2 = the data, 128 bytes maximum.

SET_DATE day,month,year

Sets the date stored in the battery backed-up system clock to the specified values. Day can be any value from 1–31; month any value from 1–12; and year any value from 0–99. The current date and time are stored for a device when an acquisition is started. See also SHOW_DATE, SET_TIME, and SHOW_TIME.

SET_DATE_START day,month,year

Sets the start date to the specified values. Normally the start date and time are set automatically whenever a device is started with the START command. See also SHOW_DATE_START, SET_TIME_START, and SHOW_TIME_START.

SET_DELAY_COLLECTION value

Controls the pileup rejector by setting a width threshold such that if a fast channel discriminator pulse is wider than value, the pulse is rejected. This portion of the pileup rejector rejects pulses that are too close together to be detected separately by the fast channel. Value is in microseconds with a range from 0.250 to 1.6 in steps of 0.05. See also SHOW_DELAY_COLLECTION.

SET_DELAY_SAMPLE num

Delays the waveform collected in InSight mode by num points. Num must be between 0 and 65535. See also SHOW_DELAY_SAMPLE.

SET_DEVICE**SET_DISPLAY****SET_FRONT_BYPASS**

No function in the DSPEC jr 2.0; included for backward compatibility.

SET_GAIN_ADJUSTMENT value

Sets the gain stabilization adjustment to an arbitrary value from –65535 to 65535. This adjustment is usually made only by the gain stabilizer, and reset to 0 with the INITIALIZE_GAIN_STABILIZATION command. See also SHOW_GAIN_ADJUSTMENT.

SET_GAIN_CHANNEL chan

Sets the center channel for the stabilizer gain peak. If a gain channel is chosen such that the beginning channel or ending channel would be below channel 0 or above the maximum

channel as determined by the conversion gain, the gain peak width is reduced until the peak fits the device boundaries. A gain channel and width must be set before gain stabilization can be enabled.

SET_GAIN_COARSE num

This sets the coarse gain to num, which must be 1, 2, 4, 8, 16, or 32. See also SHOW_GAIN_COARSE.

SET_GAIN_CONVERSION chans

Sets the conversion gain. The conversion gain defines the number of channels within the device that will be used for spectral data. This has the effect of altering the resolution of the ADC from 14 bits (conversion gain = 16384) to 9 bits (conversion gain = 512) for the device. See also SHOW_GAIN_CONVERSION.

Legal Commands:

SET_GAIN_CONVERSION 0<CR>	Conversion gain set to default (16384).
SET_GAIN_CONVERSION 512<CR>	Conversion gain set to 512 channels.
SET_GAIN_CONVERSION 1024<CR>	Conversion gain set to 1024 channels.
SET_GAIN_CONVERSION 2048<CR>	Conversion gain set to 2048 channels.
SET_GAIN_CONVERSION 4096<CR>	Conversion gain set to 4096 channels.
SET_GAIN_CONVERSION 8192<CR>	Conversion gain set to 8192 channels.
SET_GAIN_CONVERSION 16384<CR>	Conversion gain set to 16384 channels.

SET_GAIN_FINE value

Sets the fine gain to value. Value is a floating point value from 0.333 to 1.0. See also SHOW_GAIN_FINE.

SET_GAIN_NEGATIVE

Sets the amplifier input polarity to negative.

SET_GAIN_POSITIVE

Sets the amplifier input polarity to positive.

SET_GAIN_PRESET count

No function in the DSPEC jr 2.0; included for backward compatibility.

SET_GAIN_WIDTH chans

Sets the width in channels for the stabilizer gain peak. The gain width must be chosen such that the beginning channel is no lower than channel 0 and the ending channel is no higher than the maximum channel as determined by the conversion gain. The gain channel and width must be set before gain stabilization can be enabled. The absolute minimum width for the gain peak is 3 channels, and the absolute maximum width for the gain peak is 256 chan-

nels in Gauss mode. In point mode there is no maximum peak width, though the chosen width must allow the peak to fit within the device's channel limits as stated above. See also `SHOW_GAIN_WIDTH`, `SET_GAIN_CHANNEL` and `SHOW_GAIN_CHANNEL`.

SET_GATE_ANTICOINCIDENT

Causes the DSPEC jr 2.0 to use the ADC gate input signal in anticoincident mode. See also `SET_GATE_OFF`, `SET_GATE_COINCIDENT`, and `SHOW_GATE`.

SET_GATE_COINCIDENT

Causes the DSPEC jr 2.0 to use the ADC gate input signal in coincident mode. See also `SET_GATE_OFF`, `SET_GATE_ANTICOINCIDENT`, and `SHOW_GATE`.

SET_GATE_OFF

Causes the DSPEC jr 2.0 to ignore the state of the ADC gate input signal. See also `SET_GATE_COINCIDENT`, `SET_GATE_ANTICOINCIDENT`, and `SHOW_GATE`.

SET_HV value

This sets the HV bias to value, in volts.

SET_ID "id string"

Sets the sample id string. This string can be up to 16 characters long and can be set to any arbitrary value. The id string is intended to uniquely identify the sample being analyzed. See also `SHOW_ID`.

Examples:

SET_ID "Site 123"

SET_INTEGRAL_PRESET count

Sets the ROI integral preset to the specified count. During data acquisition when the sum of the counts contained in the channels that have the ROI flag set reaches the integral preset count, the preset is complete and the acquisition is stopped. The actual number of counts in the ROI integral may exceed the preset value by up to 512 counts due to the pipelined architecture of the DSPEC jr 2.0. Setting an integral preset to 0 counts disables the preset. The integral preset may be set to from 0 (disabled) to 4294967295 counts. See also `CLEAR_PRESETS` and `SHOW_INTEGRAL_PRESET`.

SET_LENGTH_SAMPLE length

Sets the number of points in the Insight mode display to the specified value. Normally this setting would remain at 1000.

SET_LIVE ticks

Sets the live-time counter to the specified number of ticks. The number represents live time in units of 20 ms (50 ticks/s). Normally this value is set by the DSPEC jr 2.0 during data acquisition. See also CLEAR_COUNTERS and SHOW_LIVE.

SET_LIVE_PRESET ticks

Sets the live-time preset to the specified number of ticks (20 ms/tick). During data acquisition when the live-time counter reaches the preset number of ticks, the preset is complete and the acquisition is stopped. Setting a live-time preset to 0 ticks disables the preset. See also CLEAR_PRESETS and SHOW_LIVE_PRESET.

SET_LLD chan

Sets the lower level discriminator to chan, which must be between 0 and 16383. See also SHOW_LLD.

SET_MDA_COEF a,b,c

Sets the coefficients in the MDA preset calculation to the specified values. A, b, and c are floating-point values. The MDA preset checks for the following condition to be met:

$$MDA\ Preset_i > \frac{a + \sqrt{b + c * Counts\ in\ ROI_i}}{Live\ Time}$$

The calculation is performed once every 30 seconds with *i* starting at 0 and advancing through each of up to 20 unique MDA presets. *i* only advances once the preset has been met. Note that a, b, and c are the same for each of the unique presets. Only the ROI range and the MDA preset change when *i* advances. Once *i* reaches 20 or *MDAPreset_i* equals 0, the acquisition terminates.

SET_MDA_PRESET MDAPreset,[PeakNumber]

Sets the MDAPreset PeakNumber value as shown in the equation in the SET_MDA_COEF description above. MDAPreset is usually the product of the desired MDA, the yield and the efficiency. PeakNumber is a parameter that specifies which of up to 20 (0–19) MDA presets to change. If PeakNumber is omitted in the set command, all MDA preset values will be set to 0 (disabled), and the supplied value will be applied to MDA Preset 0. This provides compatibility software that only supports the one-nuclide MDA method implemented in some MCBs.

SET_MODE_PHA

Sets the mode to PHA.

SET_MODE_SAMPLE

Starts the InSight Virtual Oscilloscope mode.

SET_MODE_ZDT mode

Sets the ZDT mode. LIST_MODE_ZDT can be used to determine which modes are valid. Mode 0 (standard) indicates that a normal and corrected spectrum should be stored. Mode 1 (enhanced) indicates that an error and a corrected spectrum should be stored. ENABLE_ZDT must be issued to turn on ZDT mode.

SET_OUTPUT [port, value]

This sends the value to the port. This command can be issued without entries for port and value because the DSPEC jr 2.0 has only one port. If you wish to specify a port number, it must be zero for this unit. See also SHOW_OUTPUT. See also STEP_OUTPUT.

SET_OUTPUT_HIGH [output-num]

Sets the Change Sample output to the high level. The DSPEC jr 2.0 has only one sample-changer BNC, therefore, if you include a value for output-num, it must be zero (output-num is provided for compatibility with other ORTEC instruments). See also STEP_OUTPUT.

SET_OUTPUT_LOW [output-num]

Sets the Change Sample output to the low level. The DSPEC jr 2.0 has only one sample-changer BNC, therefore, if you include a value for output-num, it must be zero (output-num is provided for compatibility with other ORTEC instruments). See also STEP_OUTPUT.

SET_PEAK_PRESET count

Sets the ROI peak preset to the specified count. During data acquisition when the contents of any channel of a device that has the ROI flag set reaches the peak preset count, the preset is complete and the acquisition is stopped. The actual number of counts in the ROI peak may exceed the preset value by a small number of counts due to the pipelined architecture of the DSPEC jr 2.0. Setting a peak preset to 0 counts disables the preset. The peak preset may be set to from 0 (disabled) to 2147483647 counts. See also CLEAR_PRESETS and SHOW_PEAK_PRESET.

SET_PZ num

This sets the pole zero to num, which must be between 0 and 4095. See also ENABLE_PZ_AUTO, SHOW_PZ, and DISABLE_PZ_AUTO.

SET_RADIX_BINARY

Not used in the DSPEC jr 2.0; included for backward compatibility.

SET_ROI start_chan,number_of_chans

Sets the ROI flags for the specified channels. This command can be used multiple times to set ROI flags without affecting previously set flags. ROI flags specify channels within a device that are considered for ROI integral and ROI peak presets.

SET_ROI_MDA start,numchans, [PeakNumber]

Sets the region to use to compute the gross counts in the MDA calculation. PeakNumber is an optional parameter (assumed 0 if not present) that specifies which of up to 20 (0–19) MDA Presets to change.

SET_ROI_SAMPLE num

Selects which control signals are displayed as an ROI on the captured waveform. Only a single bit can be turned on at a time. The following signals can be selected with the associated bit.

Bit 0:	Pileup reject.
Bit 1:	Negative baseline threshold.
Bit 2:	Baseline restorer gate.
Bit 3:	Positive baseline threshold.
Bit 4:	Busy.
Bit 5:	Gate.
Bit 6:	Reserved.
Bit 7:	Peak detect.
Bit 8:	Reserved.

SET_ROI_UNCERTAINTY start, chans

Sets the region to be used for the uncertainty preset calculation. See also SHOW_ROI_UNCERTAINTY.

SET_SEGMENT

Not used; included for backward compatibility.

SET_SHAP_FLAT value

Sets the width of the flattop to value. Value is in microseconds, ranging from 0.3 to 2.4 in steps of 0.1. See also SHOW_SHAP_FLAT.

SET_SHAP_RISE value

Sets the rise time to value. Value is in microseconds, ranging from 0.8 to 23.0 in steps of 0.2. See also SHOW_SHAP_RISE.

SET_SHUTDOWN index

Used in conjunction with the LIST_SHUTDOWN command to set the high voltage shutdown setting. Index specifies a position in the list of legal shutdown settings which were displayed with the LIST_SHUTDOWN command.

Example:

SET_SHUT 0	Sets the SHUTDOWN to TTL.
SET_SHUT 1	Sets the SHUTDOWN to ORTEC.
SET_SHUT 2	Sets the SHUTDOWN to SMART1

SET_SHUTDOWN_ORTEC

This sets the bias shutdown mode to ORTEC.

SET_SHUTDOWN_SMART

Sets the bias shutdown mode to SMART-1.

SET_SHUTDOWN_TTL

This sets the bias shutdown mode to TTL.

SET_THRESHOLD_NEGATIVE value

Sets the negative threshold to value. The negative threshold is normally set automatically by the DSPEC jr 2.0. See also ENABLE_THRESHOLD_AUTOMATIC and SHOW_THRESHOLD_NEGATIVE.

SET_THRESHOLD_POSITIVE value

Sets the positive threshold to value. The positive threshold is normally set automatically by the DSPEC jr 2.0. See also ENABLE_THRESHOLD_AUTOMATIC and SHOW_THRESHOLD_POSITIVE.

SET_TIME hour,min,sec

Sets the time stored in the battery backed-up system clock to the specified values. hour can be any value from 0–23; min and sec can be any value from 0–59. The current date and time are stored for a device when an acquisition is started. See also SHOW_TIME, SET_DATE, SHOW_DATE, SET_TIME_START, and SHOW_TIME_START.

SET_TIME_START hour,min,sec

Sets the start time to the specified values. Normally the start date and time are set automatically whenever a device is started with the START command. See also SHOW_TIME_START, SET_DATE_START, SHOW_DATE_START, SET_DATE, and SET_TIME.

SET_TRIGGER_POLARITY polarity

This sets the polarity of the input trigger for the sample changer (which occurs on the SAMPLERDYIN BNC) to zero or 1. Zero means it is negative-edge triggered and triggers on a high-to-low transition; 1 means the trigger is positive-edged and triggers on a low-to-high transition. See also TRIGGER, ENABLE_TRIGGER, DISABLE_TRIGGER, SHOW_TRIGGER, and SHOW_TRIGGER_POLARITY.

SET_TRUE ticks

Sets the true-time counter to the specified number of ticks. The number represents true time in units of 20 ms (50 ticks/sec). Normally this value is set by the DSPEC jr 2.0 during data acquisition. See also CLEAR_COUNTERS and SHOW_TRUE.

SET_TRUE_PRESET ticks

Sets the true-time preset to the specified number of ticks (20 ms/tick). During data acquisition when the true-time counter reaches the preset number of ticks, the preset is complete and the acquisition is stopped. Setting a true-time preset to 0 ticks disables the preset. See also CLEAR_PRESETS and SHOW_TRUE_PRESET.

SET_ULD value

This sets the upper level discriminator to value, in channels.

SET_UNCERTAINTY_PRESET percent

Sets the uncertainty preset to the specified value in percent. Percent is a floating point value from 0–99.9999. See also SHOW_UNCERTAINTY_PRESET.

SET_WINDOW [start, length]

Sets the window of interest to the specified start channel and number of channels. The channels of spectral data in the window of interest are affected by commands such as CLEAR, SET_DATA, and WRITE. If neither start nor length is provided, the window is set to the maximum size allowed by the conversion gain specified. The window of interest is always set to the maximum size after a SET_DEVICE command or a SET_SEGMENT command.

SET_ZERO_ADJUSTMENT value

Sets the zero stabilization adjustment to an arbitrary value from –65535 to 65535. The total range of the adjustment value represents ± 256 channels. This adjustment is usually only made by the gain stabilizer, and reset to 0 with the INITIALIZE_ZERO_STABILIZATION command. See also SHOW_ZERO_ADJUSTMENT.

SET_ZERO_CHANNEL chan

Sets the center channel for the stabilizer zero peak. If a zero channel is chosen such that the beginning channel or ending channel would be below channel 0 or above the maximum

channel, as determined by the conversion gain, the zero peak width is reduced until the peak fits the device boundaries. A zero channel and width must be set before zero stabilization can be enabled. See also `ENABLE_ZERO_STABILIZATION`.

SET_ZERO_WIDTH chans

Sets the width in channels for the stabilizer zero peak. The zero width must be chosen such that the beginning channel is no lower than channel 0 and the ending channel is no higher than the maximum channel as determined by the conversion gain. The zero channel and width must be set before zero stabilization can be enabled. The absolute minimum width for the zero peak is 3 channels, and the absolute maximum width for the zero peak is 256 channels in Gauss mode. In point mode there is no maximum peak width, though the chosen width must allow the peak to fit within the device's channel limits as stated above.

SHOW_ACTIVE

Returns a 1 if the DSPEC jr 2.0 is active (i.e., acquiring spectral data) or 0 if it is not active.

Responses:

\$C00000087<CR> Not active.

\$C00001088<CR> Active.

SHOW_BLRE

Shows the baseline restorer time constant in microseconds. See also `SET_BLRE`.

Responses:

BLUE 0000000000000091 Time constant is 91 μ s.

SHOW_BLRE_AUTOMATIC

Shows whether automatic selection of the baseline restorer constant is off or on.

Responses:

\$IT<CR> Automatic baseline is enabled.

\$IF<CR> Automatic baseline is disabled.

SHOW_CONFIGURATION

Returns a record that indicates the hardware configuration of the MCB. The record contains information about the number of segments in an MCB device (always 1 for the DSPEC jr 2.0), and the current conversion gain for each segment. The record is organized as follows:

\$J1638400001aaaaa00000[65 zeros here for total of 75 zeros]00000ccc

where **aaaaa** represents the conversion gain for the one and only segment in the currently selected device, and **ccc** represents the record checksum. See the section on response records in this chapter for more information about response records and checksums.

SHOW_CONFIGURATION_MASK

Returns two masks, the first of which can be “anded” with data from the MCB to clear the ROI bit from the data. When the second mask value is “anded” with data from the MCB, the data bits are removed and only the ROI bit remains.

Response:

CONF_MASK 02147483647 02147483648

SHOW_CONFIGURATION_UART

Reports the baud rate, parity option, number of data bits, and number of stop bits for the serial interface.

Responses:

\$F09600N81	9600 baud, no parity, 8 data bits, 1 stop bit.
\$F19200E82	19200 baud, even parity, 8 data bits, 2 stop bits.
\$F02400O71	2400 baud, odd parity, 7 data bits, 1 stop bits.

SHOW_CORRECTION_FLAT

Shows the flattop correction value. See also SET_CORR_FLAT.

Responses:

CORR_FLAT 0000000000000000

SHOW_CRM

Returns the current reading of the count-rate meter.

Response:

\$G0000050781096 Current input count rate is 50781 counts/s.

SHOW_DATA_APPLICATION “string”

If string matches “string1” in a previous SET_DATA_APPLICATION command, then string2 from that command is returned. The response is a \$F record.

SHOW_DATE

Returns the day, month, and year of the current date as maintained in the battery-backed-up real time clock, in the form dddmmmyyy. The day is returned as a 3-digit integer number from 001 to 031, month as a 3-digit integer number from 001 to 012, and year as a 3-digit integer number from 000 to 099. See also SET_DATE_START.

Responses:

\$N001001088052<CR>	Date reported as Jan 1, 1988.
...	...
\$N031012099059<CR>	Date reported as Dec 31, 1999.
\$N001001000036<CR>	Date reported as Jan 1, 2000.
...	...
\$N031012087056<CR>	Date reported as Dec 31, 2087.

SHOW_DATE_START

Returns the day, month and year of the acquisition start date in the form dddmmmyyy. The day is returned as a 3-digit integer number from 001–031, month as a 3-digit integer number from 001–012, and year as a 3-digit integer number from 000–099. See also SET_DATE_START.

Responses:

\$N001001088052<CR>	Date reported as Jan 1, 1988.
...	...
\$N031012099059<CR>	Date reported as Dec 31, 1999.
\$N001001000036<CR>	Date reported as Jan 1, 2000.
...	...
\$N031012087056<CR>	Date reported as Dec 31, 2087.

SHOW_DELAY_COLLECTION

Shows the width of the PUR signal setting. See also SET_DELAY_COLLECTION.

Responses:

DEL_COLL 0000000000001.6

SHOW_DELAY_SAMPLE

Shows the Delay Sample setting. See also SET_DELAY_SAMPLE.

Responses:

\$C00003090 The sample number is 00003, and 090 is the checksum.

SHOW_DET_SNUM

This command responds with the detector serial number stored in the SMART-1 DIM.

Response:

\$FP40175 Serial number P40175.

SHOW_DET_VERSION

Returns the DIM firmware version.

Examples:

\$FNAID000	NaI DIM firmware version.
\$FSMDT000	SMART-1 firmware version.

SHOW_DEVICE

Shows the currently selected device. Always 1 for DSPEC jr 2.0.

SHOW_DISPLAY

Not used; included for backward compatibility.

SHOW_FEATURES

Responds with four 32-bit masks indicating which features are present in the MCB. See Appendix 3.3 for a complete description of each bit in the mask.

Example Response:

FEATURES 02285062207 02014941185 0000000000 0000000000

SHOW_GAIN_ADJUST

Returns the gain-stabilizer amplifier setting.

SHOW_GAIN_CHANNEL

Reports the current center channel for the stabilizer gain peak. See also SET_GAIN_CHANNEL.

Responses:

\$C00000087<CR>	Gain channel has not been set.
\$C00002089<CR>	Gain channel is channel 2 (lowest possible channel).
...	...
\$C16382107<CR>	Gain channel is channel 16382 (highest possible channel).

SHOW_GAIN_COARSE

Returns the coarse gain for the DSPEC jr 2.0 internal amplifier. In operation, the resulting signal gain is the product of the coarse gain, the fine gain, and the super-fine gain (used by stabilizer). The coarse gain is returned in terms of an integer gain multiplier.

Responses:

\$C00001088<CR>	Coarse gain reported as 1.
\$C00002089<CR>	Coarse gain reported as 2.
\$C00004091<CR>	Coarse gain reported as 4.
\$C00008095<CR>	Coarse gain reported as 8.
\$C00016094<CR>	Coarse gain reported as 16.
\$C00032092<CR>	Coarse gain reported as 32.

SHOW_GAIN_CONVERSION

This command returns the conversion gain.

Responses:

\$C00512095<CR>	Conversion gain reported as 512 channels.
\$C01024094<CR>	Conversion gain reported as 1024 channels.
\$C02048101<CR>	Conversion gain reported as 2048 channels.
\$C04096106<CR>	Conversion gain reported as 4096 channels.
\$C08192107<CR>	Conversion gain reported as 8192 channels.
\$C16384109<CR>	Conversion gain reported as 16384 channels.

SHOW_GAIN_FINE

Returns the current fine gain setting. See SET_GAIN_FINE.

Sample Response:

GAIN_FINE 000000.70000203 Fine gain is set to 0.7.

SHOW_GAIN_POLARITY

Returns the polarity of the amplifier input as \$F records.

Responses:

\$FNEG<CR> The amplifier input is set to negative.

\$FPOS<CR> The amplifier input is set to positive.

SHOW_GAIN_STABILIZATION

Reports the state of gain peak stabilization. See also ENABLE_GAIN_STABILIZATION and DISABLE_GAIN_STABILIZATION.

Responses:

\$IT<CR> Gain stabilization is currently enabled.

\$IF<CR> Gain stabilization is currently disabled.

SHOW_GAIN_WIDTH

Reports the current width for the stabilizer gain peak. See also SET_GAIN_WIDTH, SET_GAIN_CHANNEL, and SHOW_GAIN_CHANNEL.

Responses:

\$C00001088<CR> Gain width has not been set.

\$C00003089<CR> Gain width is 3 channels (lowest possible width).

...

\$C00256100<CR> Gain width is 256 channels (highest possible width in Gauss mode).

SHOW_GATE

Reports the current mode of operation of the ADC gate input. See also SET_GATE_OFF, SET_GATE_COINCIDENT, and SET_GATE_ANTICOINCIDENT.

Responses:

\$FOFF<CR> Reports the ADC gate is off or ignored.

\$FCOI<CR> Reports the ADC gate is in coincident mode.

\$FANT<CR> Reports the ADC gate is in anticoincident mode.

SHOW_HV

Reports the current high voltage and the status of the high voltage power supply in the form:

\$Dvvvvvssssccc.

Where vvvvv represents the current output voltage if the high voltage is enabled, or the rear-panel high voltage setting if the high voltage is disabled. sssss represents the status of the high voltage bias supply as a 16-bit decimal number with the following bit definitions:

Bit 0 (LSB): Bias supply polarity (0 = positive, 1 = negative).
Bit 1: Bias supply overload (0 = overload, 1 = normal).
Bit 2: High voltage enabled (0 = disabled, 1 = enabled).

Example Responses:

\$D0200000003077<CR> 2000 V, negative, not overloaded, disabled.
\$D0200000002076<CR> 2000 V, positive, not overloaded, disabled.
\$D0200000007082<CR> 2000 V, negative, not overloaded, enabled.

SHOW_HV_ACTUAL

Returns the value of HV actually on the detector.

SHOW_HV_DIM

Indicates whether HV_DIM is enabled or disabled.

SHOW_HV_HEALTH

Returns the status of the state of health for the detector as reported by the DIM or SMART-1.

SHOW_HV_POLARITY

This returns the HV polarity defined in the DIM as a \$F record.

Responses:

\$FNEG<CR> The HV is set to negative.
\$FPOS<CR> The HV is set to positive.

SHOW_HV_RECOMMEND

Returns HV in volts, in ASCII, from SMART-1 detectors.

SHOW_HV_TARGET

Under normal operation, the HV will go to this value when the HV is enabled. Reports the current HV setting (see SET_HV) and the status of the HV power supply in the form:

\$Dvvvvvsssssccc<CR>

where vvvvv represents the HV setting, and sssss represents the status of the HV bias supply as a 16-bit decimal number with the following bit definitions:

Bit 0 (LSB): Bias supply polarity (0 = positive, 1 = negative).
Bit 1: Bias supply overload (0 = overload, 1 = normal).
Bit 2: HV enabled (0 = disabled, 1 = enabled).

Example Responses:

\$D0200000003077<CR>	2000 V, negative, not overloaded, disabled.
\$D0200000002076<CR>	2000 V, positive, not overloaded, disabled.
\$D0200000007082<CR>	2000 V, negative, not overloaded, enabled.

SHOW_ID

Reports the sample ID string as was previously set by the SET_ID command.

Example Responses:

\$FSite 123<CR>	ID set to "Site 123".
\$FSample 123456789<CR>	ID set to "Sample 123456789".

SHOW_INPUT [0]

Reports the state of the Sample Ready input.

Responses:

\$C00000087<CR>	Sample Ready input is low.
\$C00001088<CR>	Sample Ready input is high.

SHOW_INTEGRAL [start_chan,number_of_chans]

Reports the sum of the specified group of spectral data channels. If start_chan and number_of_chans is not provided, SHOW_INTEGRAL reports the sum of all channels in the currently selected window that have their ROI flag set.

Responses:

\$G00000000000075<CR>	Integral reported as 0.
...	...
\$G4294967294131<CR>	Integral reported as 4294967294.
\$G4294967295132<CR>	Integral reported as greater than or equal to 4294967295 (maximum reportable value).

SHOW_INTEGRAL_PRESET

Reports the current ROI integral preset value. For more information about the ROI integral preset, see SET_INTEGRAL_PRESET. See also SHOW_INTEGRAL.

Responses:

\$G00000000000075<CR>	Integral preset reported as 0.
...	...
\$G4294967295132<CR>	Integral reported as 4294967295.

SHOW_INTEGRAL_REMAINING

Reports the current ROI integral remaining value. For more information about the ROI integral remaining, see SET_INTEGRAL_REMAINING. See also SHOW_INTEGRAL.

Responses:

\$G00000000000075<CR> Integral remaining reported as 0.

...

\$G4294967295132<CR> Integral reported as 4294967295.

SHOW_LENGTH_SAMPLE

Reports the number of points in the Insight mode waveform.

Response:

\$C01000088 1000 points in the waveform.

SHOW_LFR

Tells whether LFR mode is enabled.

Responses:

\$IF LFR mode disabled.

\$IT LFR mode enabled.

SHOW_LIVE

Reports the contents of the live-time counter in units of 20 ms (50 ticks/s). See also CLEAR_COUNTERS and SET_LIVE.

Responses:

\$G00000000000075<CR> Live time reported as 0 ticks.

\$G0000000001076<CR> Live time reported as 1 tick (20 ms).

...

\$G4294967295132<CR> Live time reported as 4294967295 ticks (over 23000 days).

SHOW_LIVE_PRESET

Reports the current live-time preset in units of 20 ms (50 ticks/s). See also CLEAR_PRESETS and SET_LIVE_PRESET.

Responses:

\$G00000000000075<CR> Live-time preset reported as disabled.

\$G0000000001076<CR> Live-time preset reported as 1 tick.

...

\$G4294967295132<CR> Live-time preset reported as 4294967295 ticks.

SHOW_LIVE_REMAINING

Reports the current live-time remaining in units of 20 ms (50 ticks/s). See also SET_LIVE_REMAINING.

Responses:**\$G00000000000075<CR>**

Live-time remaining reported as disabled.

\$G0000000001076<CR>

Live-time remaining reported as 1 tick.

...

\$G4294967295132<CR>

Live-time remaining reported as 4294967295 ticks.

SHOW_LLD

Shows the lower level discriminator setting. See also SET_LLD.

Responses:**\$C00050092**

The LLD is 50.

SHOW_MDA [PeakNumber]

Reports current MDA for the MDA Preset selected by PeakNumber. PeakNumber is assumed to be 0 if not supplied.

Example response:**MDA 0000000000010.7****SHOW_MDA_COEF**

Reports the current settings for coefficients a, b, and c used for the MDA calculation. See SET_MDA_COEF.

Example Responses:**MDA_COEF 00000000002.71 0000000000000000 00000021.700001**

Coefficient a = 2.71, b = 0, and c = 21.7.

SHOW_MDA_PRESET [PeakNumber]

Reports MDA preset PeakNumber. If PeakNumber is omitted, 0 is assumed.

Example Response:**MDA_PRES 0000000000025.7****SHOW_MODE**

Reports the current mode of operation (PHA or Sample [InSight Virtual Oscilloscope]). See also SET_MODE_PHA and SET_MODE_SAMPLE.

Responses:**\$FPHA<CR>**

PHA mode.

\$FSAM<CR>

Sample mode (InSight).

SHOW_MODE_ZDT

Reports the current ZDT mode. See SET_MODE_ZDT.

Responses:**MODE_ZDT 00000**

Mode 0 selected (normal and corrected).

MODE_ZDT 00001

Mode 1 selected (error and corrected).

SHOW_MONI_LABEL num

Returns with an ASCII string label designation for the state-of-health parameter for num.

SHOW_MONI_MAX

Returns with the number of state-of-health values available for viewing.

SHOW_MONI_VALUE num

Returns with an ASCII representation of the value for the state-of-health parameter.

SHOW_NAI

Indicates whether ENABLE_NAI has been sent. Responses are true and false.

Responses:

\$IT<CR>

NaI mode enabled.

\$IF<CR>

NaI mode disabled.

SHOW_NEXT

Used in conjunction with the SHOW_ROI command, SHOW_NEXT reports the next continuous group of channels that have the ROI flag set. The response is of the form

\$Dssssnnnnccc<CR>

where sssss represents an integer number that is the number of the first channel of the “next” group of channels that all have their ROI bit set, and nnnnn represents an integer number that is the number of channels in the group. If no more channels have their ROI bit set, SHOW_NEXT returns a first channel of 0 and a number of channels of 0. The SHOW_ROI command is used to report the “first” group of channels that all have their ROI bit set.

Example Responses:

\$D0100000050078<CR>

Next ROI group starts at channel 1000 and is 50 channels long.

\$D0215000150086<CR>

Next ROI group starts at channel 2150 and is 150 channels long.

\$D0000000000072<CR>

No other ROI groups to report.

SHOW_OUTPUT [0]

Reports the status of the “Change Sample” output port. The output port status is reported as a 16-bit number that is 0 or 1, depending on the level last set by a SET_OUTPUT_HIGH or SET_OUTPUT_LOW command.

Responses:

\$C00000087<CR>

Change Sample output currently low.

\$C00001088<CR>

Change Sample output currently high.

SHOW_OVERFLOW_PRESET

Reports the state of the overflow preset.

Responses:

\$IT<CR> Overflow preset enabled.
\$IF<CR> Overflow preset disabled.

SHOW_PEAK

This command returns the contents of the ROI channel with the largest number of counts. An ROI channel is a channel that has the ROI flag set. The maximum possible value is 2147483647, which is the maximum number of counts that can be stored in a 31-bit channel.

Responses:

\$G0000000000075<CR> Maximum count in an ROI channel is zero or no ROI channels were found.
\$G0000000001076<CR> Maximum count in an ROI channel is 1.
 ...
\$G2147483646120<CR> Maximum count in an ROI channel is 2147483646.
\$G2147483647121<CR> Maximum count in an ROI channel is 2147483647.

SHOW_PEAK_CHANNEL

This command returns the number of the ROI channel with the largest number of counts. An ROI channel is a channel that has the ROI flag set. The lowest number ROI channel with the largest count is reported if more than one channel contains the largest number of counts. Channel 16383 is the highest numbered channel in any device.

Responses:

\$C00000087<CR> Maximum count was found in channel 0 or no ROI channels were found.
\$C00001088<CR> Maximum count was found in channel 1.
 ...
\$C16382107<CR> Maximum count was found in channel 16382.
\$C16383108<CR> Maximum count was found in channel 16383.

SHOW_PEAK_PRESET

Reports the value of the ROI peak preset. See SET_PEAK_PRESET for information about the ROI peak preset.

Responses:

\$G0000000000075<CR> Peak preset disabled.
\$G0000000001076<CR> Peak preset set to 1 count.
 ...
\$G2147483646120<CR> Peak preset set to 2147483646 counts.
\$G2147483647121<CR> Peak preset set to 2147483647 counts.

SHOW_PZ

Displays the PZ setting. See also SET_PZ.

Responses:**PZ_ENA 002200**

Pole zero enabled and set to 2200.

PZ_DIS 001000

Pole zero disabled and set to 1000.

SHOW_PZ_AUTOMATIC

Shows the state of the automatic PZ. See also SET_PZ_AUTOMATIC.

Responses:**\$IT<CR>**

Pole zero enabled.

\$IF<CR>

Pole zero disabled (TRP).

SHOW_RADIX**SHOW_RATE_ZDT****SHOW_REMOTE**

No function in the DSPEC jr 2.0; included for backward compatibility.

SHOW_ROI

Used in conjunction with the SHOW_NEXT command, SHOW_ROI reports the first continuous group of channels that have the ROI flag set. The response is of the form:

\$Dssssnnnnccc<CR>

where ssss represents an integer number that is the number of the first channel of the “first” group of channels that all have their ROI bit set, and nnnnn represents an integer number that is the number of channels in the group. The SHOW_NEXT command is used to report the “next” group of channels that all have their ROI bit set.

Responses:**\$D0100000050078<CR>**

First ROI group starts at channel 1000 and is 50 channels long.

\$D0215000150086<CR>

First ROI group starts at channel 2150 and is 150 channels long.

\$D0000000000072<CR>

No ROI groups to report.

SHOW_ROI_MDA

Reports the start channel and number of channels used in the MDA preset calculation.

Example Response:**\$D0700000050ccc**

Calculation is performed on channels 7000–7049.

SHOW_ROI_SAMPLE

Displays the ROI Sample setting. See also SET_ROI_SAMPLE.

Responses:**\$C00001088**

SHOW_ROI_UNCERTAINTY

Reports the start channel and number of channels used in the uncertainty preset calculation. See also SET_ROI_UNCERTAINTY.

Response:

\$D0700000050ccc Calculation is performed on channels 7000–7049.

SHOW_SEGMENT

Returns the current segment number. Always 1 for the DSPEC jr 2.0.

SHOW_SHAPE_CUSP

Not used by the DSPEC jr 2.0; included for backward compatibility.

SHOW_SHAP_FLAT

Reports the width of the flattop in μ s. See also SET_SHAP_FLAT.

Responses:

SHAP_FLAT 0000000000001.2

SHOW_SHAP_RISE

Displays the rise-time setting in μ s. See also SET_SHAP_RISE.

Responses:

SHAP_RISE 0000000000003.2

SHOW_SHUTDOWN

Shows the type of HV shutdown selected.

Responses:

\$FORT	ORTEC mode selected.
\$FTTL	TTL mode selected.
\$FSM1	SMART-1 mode selected

SHOW_SHUT_ACTUAL

Returns the current status of the bias remote shutdown input signal. This command is valid whether the bias supply is turned on or off.

Responses:

\$IT	Shutdown is active (supply is shut down or can't be turned on).
\$IF	Shutdown is inactive (supply is on or can be turned on).

SHOW_SNUM

Responds with a \$F record indicating the serial number of the DSPEC jr 2.0

Response:

\$F100 Serial number = 100.

SHOW_STATUS

Returns system status information in the following format:

\$Mlllllllltttttttttaaaaahhhhccc<CR>

where **llllllll** represents the live time as returned by the SHOW_LIVE command, **tttttttt** represents the true time for the current device as returned by the SHOW_TRUE command, **aaaaa** represents the active device mask as returned by the SHOW_ACTIVE_DEVICES command, and **hhhhh** represents the hardware status, which is an ASCII representation of a 16 bit decimal number with the following bit definitions:

Bit 0 (LSB):	Bias supply polarity (0=positive, 1=negative)
Bit 1:	Bias supply overload (0=overload, 1=normal)
Bit 2:	High voltage enabled (0=disabled, 1=enabled)
Bit 3:	Unused
Bit 4:	Amplifier PZ'd since initialization (0=normal, 1=needs PZ'ing)
Bit 5	Optimization since initialization (0=normal, 1=needed)
Bits 6–7:	Unused
Bit 8:	Amplifier automatic PZ (1=Auto PZ in progress, 0=normal)
Bit 9:	Optimization (0=normal, 1=in progress)
Bits 10–14:	Unused
Bit 15 (MSB):	Reserved

SHOW_THRESHOLD_AUTOMATIC

See also SET_THRESHOLD_AUTOMATIC.

Responses:

\$IT<CR> Automatic threshold is enabled.

\$IF<CR> Automatic threshold is disabled.

SHOW_THRESHOLD_NEGATIVE

See also SET_THRESHOLD_NEGATIVE.

Responses:

THR_NEG 0000379791 Negative threshold is 379791.

SHOW_THRESHOLD_POSITIVE

See also SET_THRESHOLD_POSITIVE.

Responses:

THR_POS 00000126811 Positive threshold is 126811.

SHOW_TIME

Reports the time from the battery backed-up system clock in the form:

\$Nhhmmmssccc<CR>

where hhh represents a 3-digit integer hour (0–23), mmm represents a 3-digit integer minute (0–59), and sss represents a 3-digit integer second (0–59). See also SET_TIME, SET_DATE, and SHOW_DATE.

Example Responses:

\$N010054017052<CR> Time returned 10:54:17 (10 h, 54 min, 17 s).
\$N020013037050<CR> Time returned 20:13:37 (20 h, 13 min, 37 s).

SHOW_TIME_START

Reports the time of the last START command in the form

\$Nhhhmmmsssccc<CR>

where hhh represents a 3-digit integer hour (0 through 23), mmm represents a 3-digit integer minute (0 through 59) and sss represents a 3-digit integer second (0 through 59). See also SET_TIME_START, SET_DATE_START, and SHOW_DATE_START.

Example Responses:

\$N010054017052<CR> Time returned 10:54:17 (10 h, 54 min, 17 s).
\$N020013037050<CR> Time returned 20:13:37 (20 h, 13 min, 37 s).

SHOW_TRIGGER

Tells whether the trigger is enabled or disabled. See also ENABLE_TRIGGER.

Responses:

\$IF Trigger disabled.
\$IT Trigger enabled.

SHOW_TRIGGER_POLARITY

This returns the polarity setting of the input trigger for the sample changer (1 means the trigger is positive-edged and triggers on a low-to-high transition; 0 means it is negative-edge triggered and triggers on a high-to-low transition). See also TRIGGER, ENABLE_TRIGGER, DISABLE_TRIGGER, SHOW_TRIGGER, and SET_TRIGGER_POLARITY.

Responses:

\$FNEG<CR> The HV is set to negative.
\$FPOS<CR> The HV is set to positive.

SHOW_TRIGGER_SAMPLE

Reports the trigger source in Insight Mode.

Responses:

\$F0LLD LLD is source.
\$F1PKD Peak-detect is source.
\$F2RANDOM Trigger happens randomly.
\$F3Gate Gate Input triggers the waveform.

SHOW_TRIGGER_SPECIAL

Not used in the DSPEC jr 2.0; included for backward compatibility.

SHOW_TRUE

Reports the contents of the true-time counter in units of 20 ms (50 ticks/s). See also CLEAR_COUNTERS and SET_TRUE.

Responses:

\$G0000000000075<CR>	True time reported as 0 ticks.
\$G0000000001076<CR>	True time reported as 1 tick (20 ms).
...	...
\$G4294967295132<CR>	True time reported as 4294967295 ticks (over 23000 days).

SHOW_TRUE_PRESET

Reports the current true-time preset in units of 20 ms (50 ticks/s). See also CLEAR_PRESETS and SET_TRUE_PRESET.

Responses:

\$G0000000000075<CR>	True time preset reported as disabled.
\$G0000000001076<CR>	True time preset reported as 1 tick.
...	...
\$G4294967295132<CR>	True time preset reported as 4294967295 ticks.

SHOW_TRUE_REMAINING

Reports the current true time remaining in units of 20 milliseconds (50 ticks per second). See also SET_TRUE_REMAINING.

Responses:

\$G0000000000075<CR>	True time remaining reported as disabled.
\$G0000000001076<CR>	True time remaining reported as 1 tick.
...	...
\$G4294967295132<CR>	True time remaining reported as 4294967295 ticks.

SHOW_ULD

Returns the value of the ULD in channels, as a \$C record.

SHOW_UNCERTAINTY

Returns the current value of the uncertainty for the peak in the uncertainty preset. See also SET_UNCERTAINTY.

Responses:

UNCE 000000000008.5	Uncertainty of the peak is 8.5%.
----------------------------	----------------------------------

SHOW_UNCERTAINTY_PRESET

Returns the current uncertainty preset setting. See also SET_UNCERTAINTY_PRESET.

Responses:

UNCE_PRES 0000000000000000 No preset.
UNCE_PRES 00000000000008.5 Preset set to 8.5%.

SHOW_VERSION

Reports the DSPEC jr 2.0 firmware version number in the form

Fmmm-vvv<CR>

where mmmm is a 4-character model designator and vvv is a 3-character version designator.

Example Responses:

\$FDSJR-002<CR> Model DSPEC jr 2.0 firmware Version 2 reported.

SHOW_WINDOW

Reports the start channel and number of channels in the window of interest, in the form:

\$Dxxxxxyyyyccc<CR>

where xxxxx is the start channel (0–16383) and yyyyy is the number of channels (1–16384).

See SET_WINDOW for more information about the window of interest.

Example Responses:

\$D0000016384094<CR> Window of interest reported as starting at channel 0 and continuing for 16384 channels.
\$D0000008192092<CR> Window of interest reported as starting at channel 0 and continuing for 8192 channels.
\$D0819208192112<CR> Window of interest reported as starting at channel 8192 and continuing for 8192 channels.

SHOW_ZDT

Reports if ZDT mode is enabled.

Responses:

\$IF ZDT mode disabled.
\$IT ZDT mode enabled.

SHOW_ZERO_ADJ

Returns the value of the zero offset for the zero stabilizer.

SHOW_ZERO_CHANNEL

Reports the center channel for the stabilizer zero peak. See also SET_ZERO_CHANNEL, SET_ZERO_WIDTH, and SHOW_ZERO_WIDTH.

Responses:

\$C00000087<CR>	Zero channel has not been set.
\$C00002089<CR>	Zero channel is channel 2 (lowest possible channel).
...	...
\$C16382107<CR>	Zero channel is channel 16382 (highest possible channel).

SHOW_ZERO_STABILIZATION

Reports the state of zero peak stabilization. See also **ENABLE_ZERO_STABILIZATION** and **DISABLE_ZERO_STABILIZATION**.

Responses:

\$IT<CR>	Zero stabilization is currently enabled.
\$IF<CR>	Zero stabilization is currently disabled.

SHOW_ZERO_WIDTH

Reports the current width for the stabilizer zero peak. See also **SET_ZERO_WIDTH**, **SET_ZERO_CHANNEL**, and **SHOW_ZERO_CHANNEL**.

Responses:

\$C00001088<CR>	Zero width has not been set.
\$C00003089<CR>	Zero width is 3 channels (lowest possible width).
...	...
\$C00256100<CR>	Zero width is 256 channels (highest possible width in Gauss mode).
...	...
\$C16383108<CR>	Zero width is 16383 channels (highest possible width in point mode with zero channel set to 8192).

START [seg-mask]

Starts the acquisition of spectral data. The optional segment mask is provided for compatibility with other MCBs and may be any value from 0 to 65535 but is ignored by the DSPEC jr 2.0.

START_FLAT_AUTO

Performs optimization of PZ and flattop correction for a single rise time instead of all rise times.

START_OPTIMIZE

Starts optimization of PZ and flattop correction for all rise times.

START_PZADJUST_AUTO

Starts the automatic PZ process. The automatic PZ is not complete until indicated by the auto PZ status bit. This bit is returned by the SHOW_STATUS command. Spectral data can be corrupted if automatic PZ is initiated while a device is collecting data.

Execution Errors:**%131136084<CR>**

The command was attempted while the amplifier was set for a transistor reset preamplifier. No action was taken.

STEP_OUTPUT

Causes a pulse to be output on the Change Sample output port. The level of the Change Sample output is changed then returned to the level present when the STEP_OUTPUT command was received. The duration of the intermediate level varies but is never less than 2 μ s. Use the SET_OUTPUT_HIGH or SET_OUTPUT_LOW commands to establish an initial output level.

Responses:**\$C00000087<CR>**

Initial and final level on Change Sample was low.

\$C00001088<CR>

Initial and final level on Change Sample was high.

STOP [seg-mask]

Stops the acquisition of spectral data. The optional segment mask is provided for compatibility with other MCBs and may be any value from 0 to 65535 but is ignored.

STOP_OPTIMIZE

Stops the optimization in progress. The DSPEC jr 2.0 may be in an indeterminate mode. See also START_OPTIMIZE.

STOP_PZ_AUTOMATIC

Stops the optimization in progress. The DSPEC jr 2.0 may be in an indeterminate mode. See also START_PZ_AUTOMATIC.

TRIGGER

Starts data acquisition if the trigger has been enabled (ENABLE_TRIGGER).

VERIFY_CORR_FLAT**VERIFY_SHAP_FLAT****VERIFY_SHAP_RISE**

These test the argument against the list of valid settings and return true if valid.

[Intentionally blank]

APPENDIX A. STATE-OF-HEALTH BIT DEFINITIONS

Following are descriptions of the SOH bit. To monitor these within MAESTRO, click **Acquire/ MCB Properties...**, then on the Status tab (see Fig. 26).

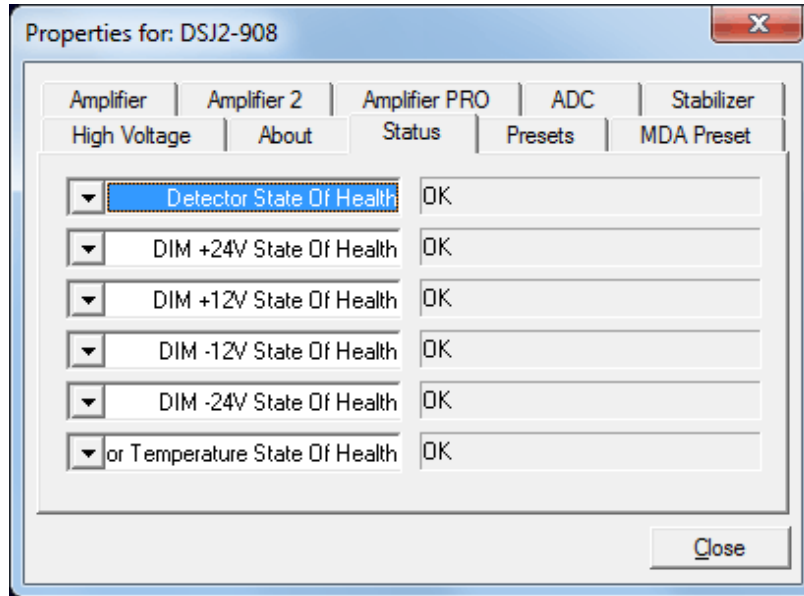


Figure 26. The SOH Status Tab within MAESTRO.

Bit	Description	Comment
0	+24V	
1	+12V	The first four bits monitor the voltages coming from the DSPEC jr 2.0. If one of these values varies by more than ± 2 V, the corresponding bit is set.
2	-12 V	
3	-24V	
4	Temperature	
5	HV voltage	Set if the high voltage deviates by more than ± 300 V from the value you entered in MAESTRO.
6	Overload	Set if the preamplifier overloads for more than about 4.0 seconds.
7	Shutdown	Set if the preamplifier shuts down for any reason.

<u>Bit</u>	<u>Description</u>	<u>Comment</u>
8	Security	At the start of the acquisition, the DSPEC jr 2.0 queries the SMART-1 detector for its serial number. The DSPEC jr 2.0 then writes a random number to the detector. At the end of the acquisition, both numbers are read from the detector and compared to the original values. If there is a mismatch, the Security SOH bit is set.
9	Power	Set if the power fails during an acquisition.

ADC setup	31	Troubleshooting	41
Anticoincidence	31	Uncertainty preset	38
Ballistic deficit and flattop	6	Upper level discriminator (ULD)	32
Coincidence	31	ZDT mode	1, 7, 31
DSPEC jr 2.0		zero dead time - see ZDT mode	1
ADC setup	31	Zero stabilization	32
amplifier settings	24, 26	Initialize	32
anticoincidence	31		
coincidence	31		
high-voltage setup	33		
InSight mode	27		
live-time preset	37		
low-frequency rejector (LFR)	3, 30		
lower level discriminator	31		
MDA preset	38		
optimize	25		
overflow preset	38		
real-time preset	37		
ROI integral preset	38		
ROI peak count preset	37		
stabilizer setup	32		
uncertainty preset	38		
upper level discriminator	32		
zero dead-time (ZDT) mode	31		
Feature mask bits	47		
Flattop	26		
ballistic deficit	6		
Tilt	26		
Width	26		
Gain stabilization	32		
Initialize	32		
High voltage	33		
InSight Mode	26, 27		
Mark types	29		
Installation	19		
Integration time	26		
Low-Frequency Rejector (LFR)	3		
Lower level discriminator (LLD)	31		
MDA preset	38		
Presets - see Acquisition presets	37		
Resolution	26		
SMART-1 detector	1, 12, 17, 34		
State of health (SOH)	2, 14, 34, 89		

[Intentionally blank]